

WAAS CH <b>77608</b> <b>W17A</b>	APP CRS <b>174°</b>	Rwy Idg TDZE Apt Elev	<b>3700</b> <b>1479</b> <b>1479</b>
--	------------------------	-----------------------------	---

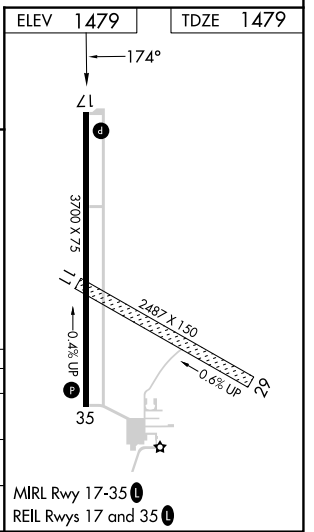
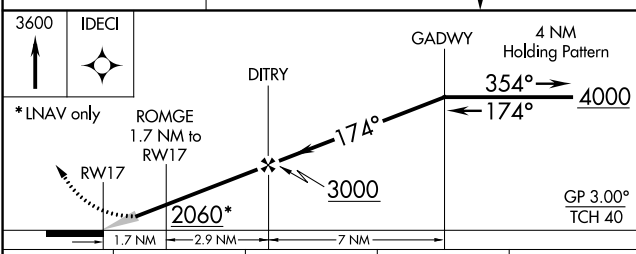
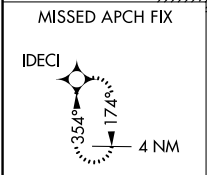
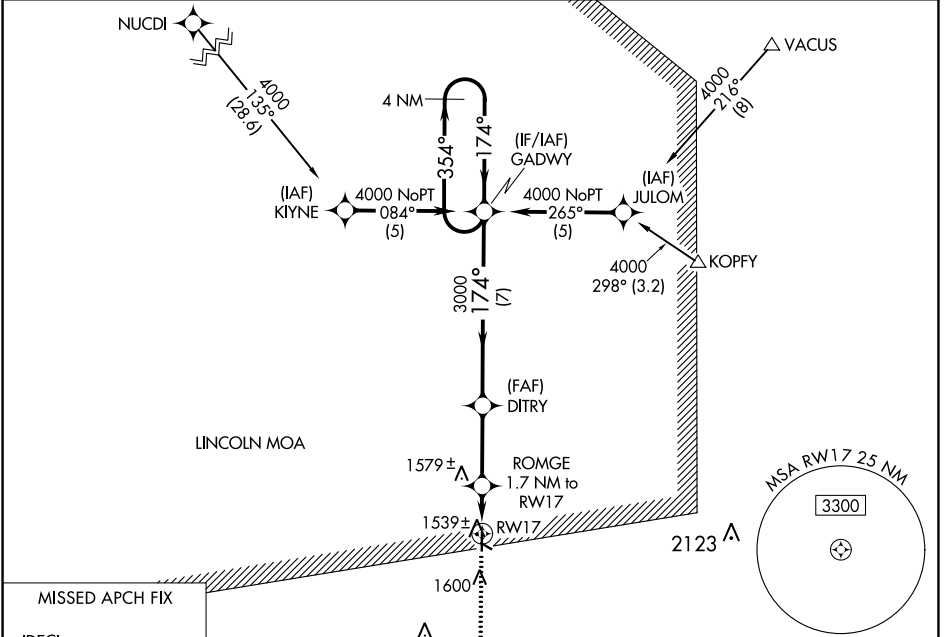
# RNAV (GPS) RWY 17

FAIRBURY MUNI (F'BY)

**NA** DME/DME RNP-0.3 NA. Use Hebron Muni altimeter setting; if not received, use Beatrice Muni altimeter setting and increase DA to 1798 feet and all visibilities ¼ mile; increase all MDA 40 feet. Circling NA to Rwy's 11 and 29.

MISSED APPROACH: Climb to 3600 direct IDECI and hold.

HJH AWOS-3 <b>118.525</b>	MINNEAPOLIS CENTER <b>126.4 317.7</b>	UNICOM <b>122.7 (CTAF)</b>
------------------------------	--	-------------------------------



CATEGORY	A	B	C	D
LPV DA	1775-1	296 (300-1)		NA
LNAV MDA	1880-1	401 (500-1)		NA
CIRCLING	1960-1	481 (500-1)		NA

NC-2, 28 NOV 2024 to 26 DEC 2024

NC-2, 28 NOV 2024 to 26 DEC 2024