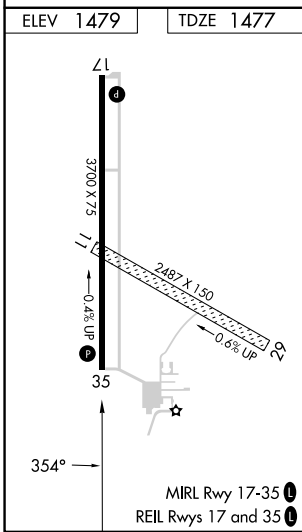
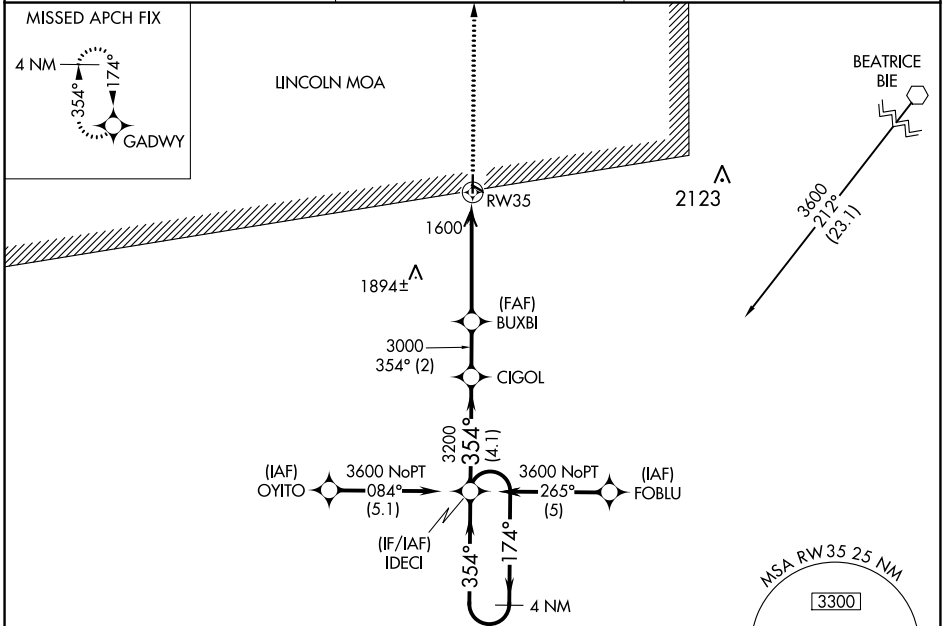


WAAS CH 65808 W35A	APP CRS 354°	Rwy Idg TDZE Apt Elev	3700 1477 1479
----------------------------------------	------------------------	-----------------------------	-------------------------------------------

RNAV (GPS) RWY 35

FAIRBURY MUNI (F'BY)

RNP APCH.		MISSED APPROACH: Climb to 4000 direct GADWY and hold.
Use Hebron altimeter setting; when not received, use Beatrice altimeter setting: increase LPV DA to 1796 feet and all visibilities ¼ SM; increase all MDAs 40 feet. Circling NA to Rwys 11 and 29.		
HJH AWOS-3 118.525	MINNEAPOLIS CENTER 126.4 317.7	UNICOM 122.7 (CTAF) 0



4 NM Holding Pattern IDECI 3600 ← 174° 354° → GP 3.00° TCH 40	IDECI CIGOL BUXBI RW35	4000	GADWY	
		4.1 NM 2 NM 4.6 NM		
CATEGORY	A	B	C	D
LPV DA	1773-1	296 (300-1)		NA
LNAV MDA	1900-1	423 (500-1)		NA
CIRCLING	1960-1	481 (500-1)		NA

NC-2, 28 NOV 2024 to 26 DEC 2024

NC-2, 28 NOV 2024 to 26 DEC 2024