

JUDTH SEVEN DEPARTURE (RNAV)

AL-6494 (FAA)

CHANDLER MUNI (CHD)
CHANDLER, ARIZONA

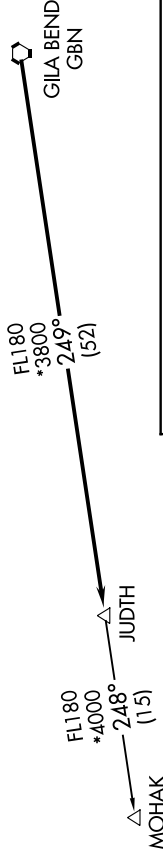
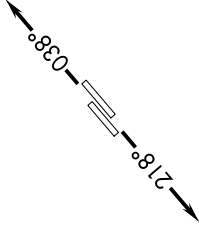
SW-4, 28 NOV 2024 to 26 DEC 2024

ATIS 128.325
GND CON 124.4
CHANDLER TOWER * 126.1 (Rwy 4L-22R)
133.1 (Rwy 4R-22L)
PHOENIX DEP CON 123.7 363.0

NOTE: RNAV 1.
NOTE: Turbojets and turboprops only.
NOTE: RADAR required.
NOTE: GPS required.
NOTE: Aircraft departing KGEU and KGYR ATC assigned only.

TAKEOFF MINIMUMS
Rwys 4L/R, 22L/R: Standard.

TOP ALTITUDE:
ASSIGNED BY ATC



NOTE: Chart not to scale.

DEPARTURE ROUTE DESCRIPTION

TAKEOFF RUNWAYS 4L/R: Climb heading 038° or as assigned by ATC, thence. . . .

TAKEOFF RUNWAYS 22L/R: Climb heading 218° or as assigned by ATC, thence. . . .

. . . expect RADAR vectors to GBN VORTAC, then on track 249° to JUDTH, then on (transition). Maintain ATC assigned altitude, expect filed altitude 3 minutes after departure.

MOHAK TRANSITION (JUDTH7.MOHAK)

JUDTH SEVEN DEPARTURE (RNAV)

SW-4, 28 NOV 2024 to 26 DEC 2024