

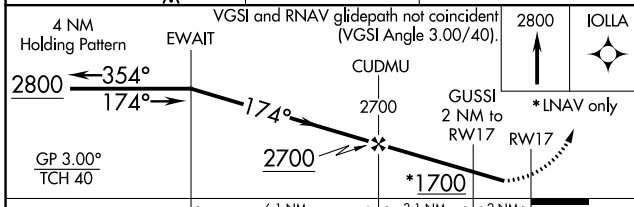
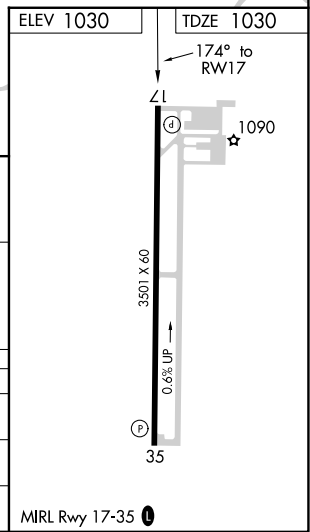
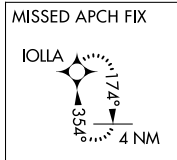
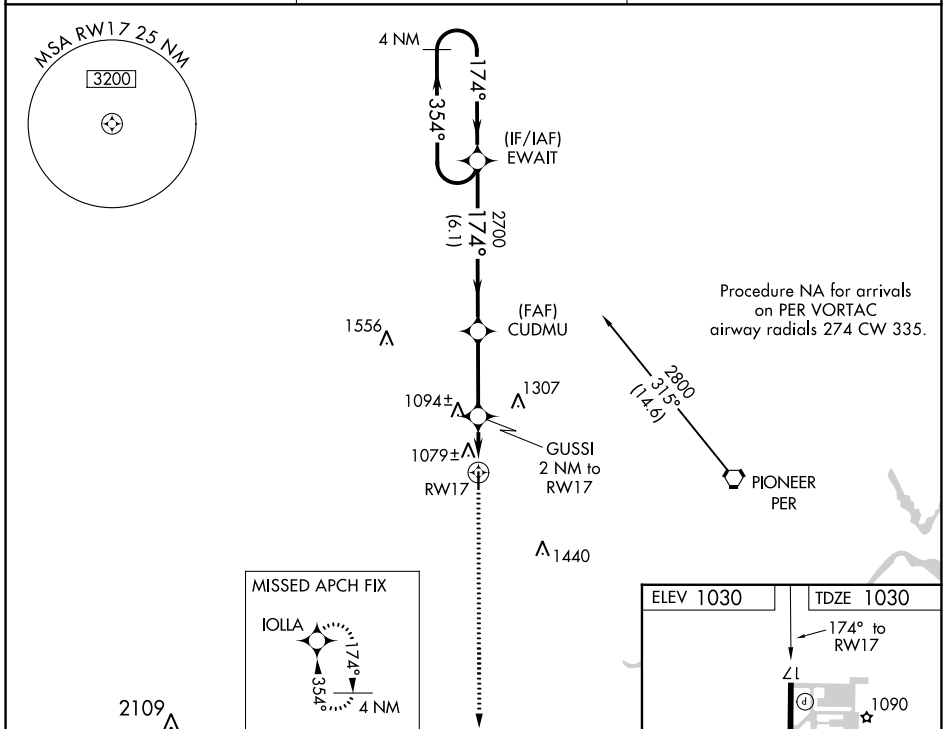
WAAS CH 97519 W17A	APP CRS 174°	Rwy Idg TDZE Apt Elev	3501 1030 1030
--	------------------------	-----------------------------	---

RNAV (GPS) RWY 17

BLACKWELL-TONKAWA MUNI (BKN)

RNP APCH.	<p>⚠ For uncompensated Baro-VNAV systems, LNAV/VNAV NA below -17°C or above 54°C. Rwy 17 helicopter visibility reduction below 3/4 SM NA. When local altimeter setting not received, use Ponca City altimeter setting and increase all DA 31 feet and all MDA 40 feet and LNAV Cat C visibility 1/4 mile. Baro-VNAV NA when using Ponca City altimeter setting.</p>	MISSED APPROACH: Climb to 2800 direct IOLLA and hold.
-----------	---	---

AWOS-3PT 120.575	KANSAS CITY CENTER 127.8 319.1	UNICOM 122.8 (CTAF)
----------------------------	--	-------------------------------



CATEGORY	A	B	C	D
LPV DA	1280-1	250 (300-1)		NA
LNAV/VNAV DA	1376-1 1/4	346 (400-1 1/4)		NA
LNAV MDA	1400-1	370 (400-1)		NA

MRL Rwy 17-35

SC-1, 28 NOV 2024 to 26 DEC 2024

SC-1, 28 NOV 2024 to 26 DEC 2024