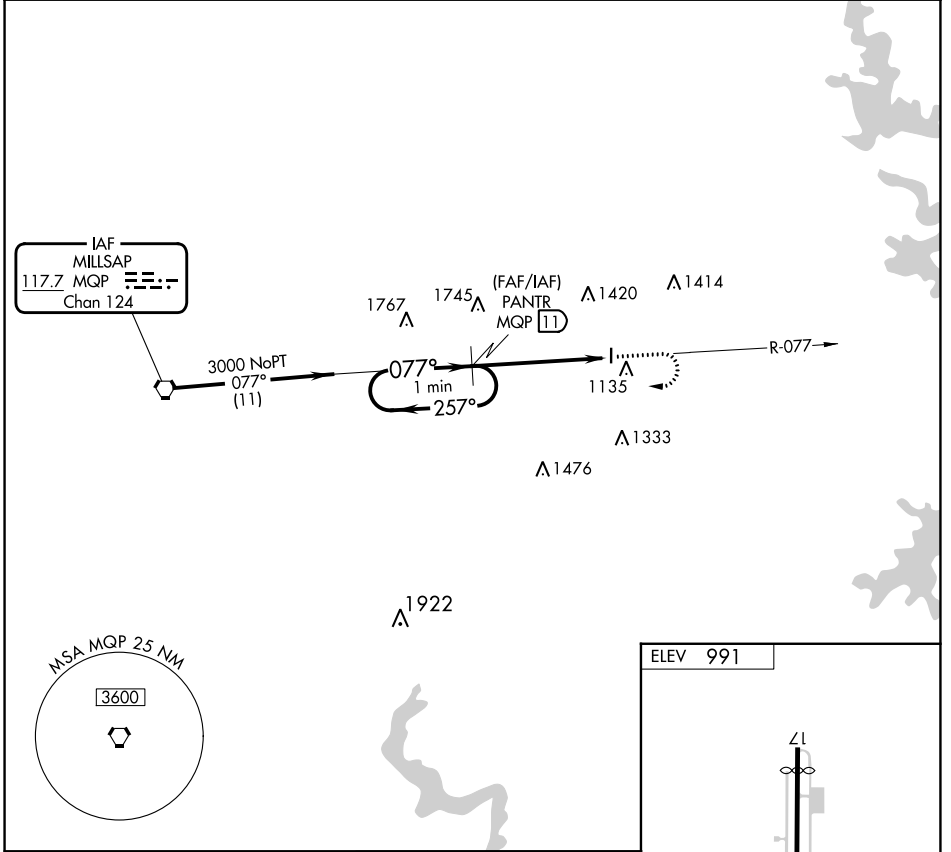


VORTAC MQP <b>117.7</b> Chan <b>124</b>	APP CRS <b>077°</b>	Rwy Idg TDZE Apt Elev	<b>N/A</b> <b>N/A</b> <b>991</b>
---	------------------------	-----------------------------	--

# VOR/DME-A

PARKER COUNTY (WEA)

<p><b>NA</b> Use Fort Worth Meacham altimeter setting.</p>	<p>MISSED APPROACH: Climb to 1900 then climbing right turn to 3000 via heading 290° and MQP R-077 to PANTR and hold.</p>
<p>LONE STAR APP CON <b>135.975 379.9</b></p>	<p>UNICOM <b>122.7 (CTAF)</b></p>



SC-2, 28 NOV 2024 to 26 DEC 2024

SC-2, 28 NOV 2024 to 26 DEC 2024

