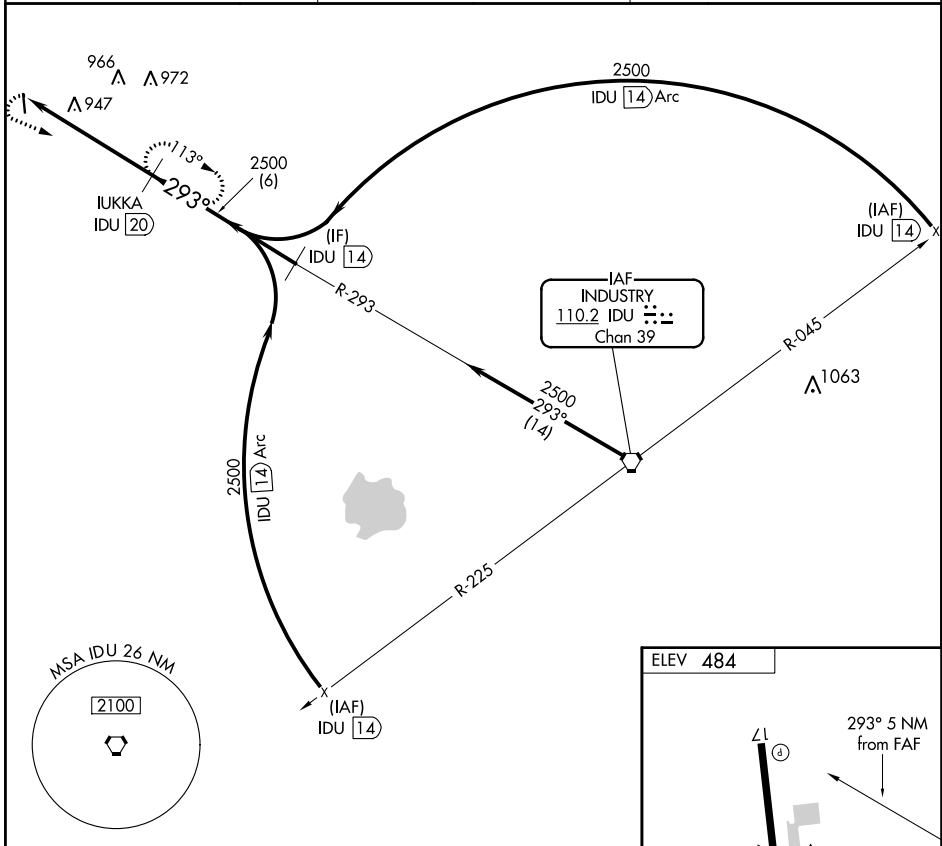


VORTAC IDU 110.2 Chan 39	APP CRS 293°	Rwy Idg TDZE Apt Elev N/A N/A 484
--	------------------------	---

VOR/DME-A
GIDDINGS-LEE COUNTY (GYB)

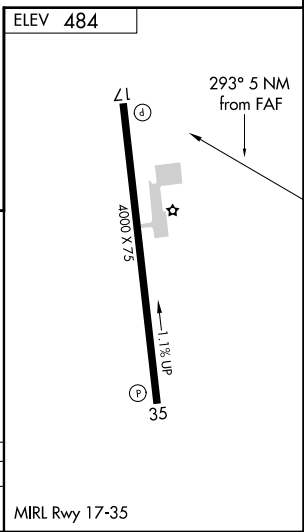
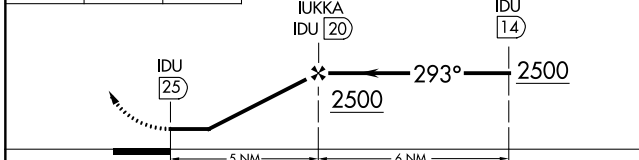
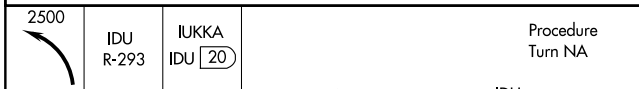
NA Procedure NA at night. Helicopter visibility reduction below 1 SM NA. Use Austin-Bergstrom altimeter setting. MISSED APPROACH: Climbing left turn to 2500 via IDU R-293 to IUKKA 20 DME and hold.

AWOS-3 119.225	AUSTIN APP CON 127.225 317.65	UNICOM 123.05 (CTAF)
--------------------------	---	--------------------------------



SC-5, 28 NOV 2024 to 26 DEC 2024

SC-5, 28 NOV 2024 to 26 DEC 2024



CATEGORY	A	B	C	D
CIRCLING	1300-1¼	816 (900-1¼)	1300-2½ 816 (900-2½)	NA