

| | | | |
|--|------------------------|-----------------------------|---|
| WAAS CH 48819 W03A | APP CRS 032° | Rwy Idg TDZE Apt Elev | 5500 147 164 |
|--|------------------------|-----------------------------|---|

RNAV (GPS) RWY 3

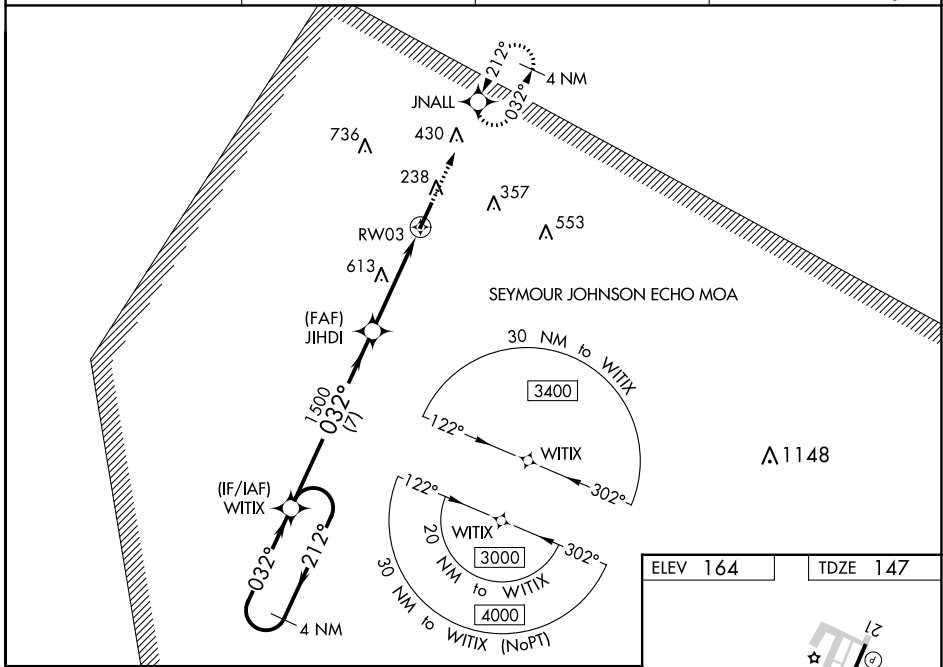
JOHNSTON RGNL (JNX)

⚠ For uncompensated Baro-VNAV systems, LNAV/VNAV NA below -1.5°C (5°F) or above 54°C (130°F). DME/DME RNP-0.3 NA. When local altimeter setting not received, use Erwin altimeter setting and increase LPV DA to 447 feet. LNAV/VNAV DA to 1020 feet, and all LNAV/VNAV visibilities ½ mile. Increase all MDA 60 feet; increase visibility Cat B, C, and D ¼ mile. Baro-VNAV and VDP NA with Erwin altimeter setting. Inop table does not apply to LNAV/VNAV when using Erwin altimeter setting. For inop MALS when using Erwin altimeter setting, increase LPV all Cats visibility to 1 mile and LNAV Cats C/D visibility to 2½ miles.

MALS

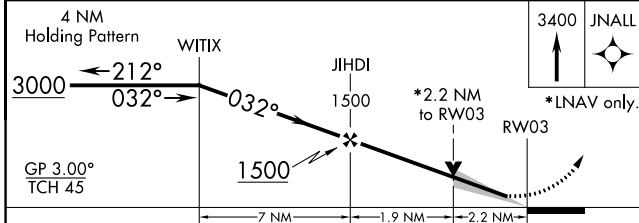
MISSED APPROACH:
Climb to 3400 direct JNALL and hold, continue climb-in-hold to 3400.

| | | | |
|--------------------------|---|-----------------------|--|
| AWOS-3 120.225 | RALEIGH APP CON 125.3 353.675 | GCO 135.075 | UNICOM 122.725 (CTAF) 0 |
|--------------------------|---|-----------------------|--|

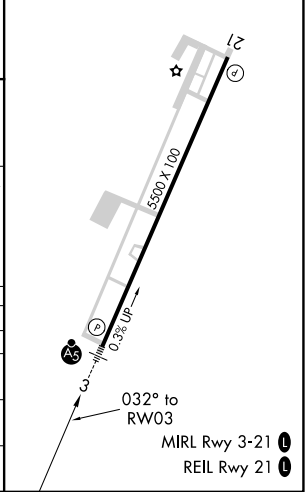


SE-2, 28 NOV 2024 to 26 DEC 2024

SE-2, 28 NOV 2024 to 26 DEC 2024



| | |
|----------|----------|
| ELEV 164 | TDZE 147 |
|----------|----------|



| CATEGORY | A | B | C | D |
|-------------------|-------|-------------|------------------------|------------------------|
| LPV DA | | 397-½ | 250 (300-½) | |
| LNAV/VNAV DA | | 970-2½ | 823 (900-2½) | |
| LNAV MDA | 880-½ | 733 (800-½) | 880-1⅞ | 733 (800-1⅞) |
| C CIRCLING | 880-1 | 716 (800-1) | 920-2¼ 756 (800-2¼) | 1100-3 936 (1000-3) |