

LOC I-IVI <b>111.1</b>	APP CRS <b>058°</b>	Rwy Idg TDZE Apt Elev	<b>5500</b> <b>2402</b> <b>2419</b>
---------------------------	------------------------	-----------------------------	---

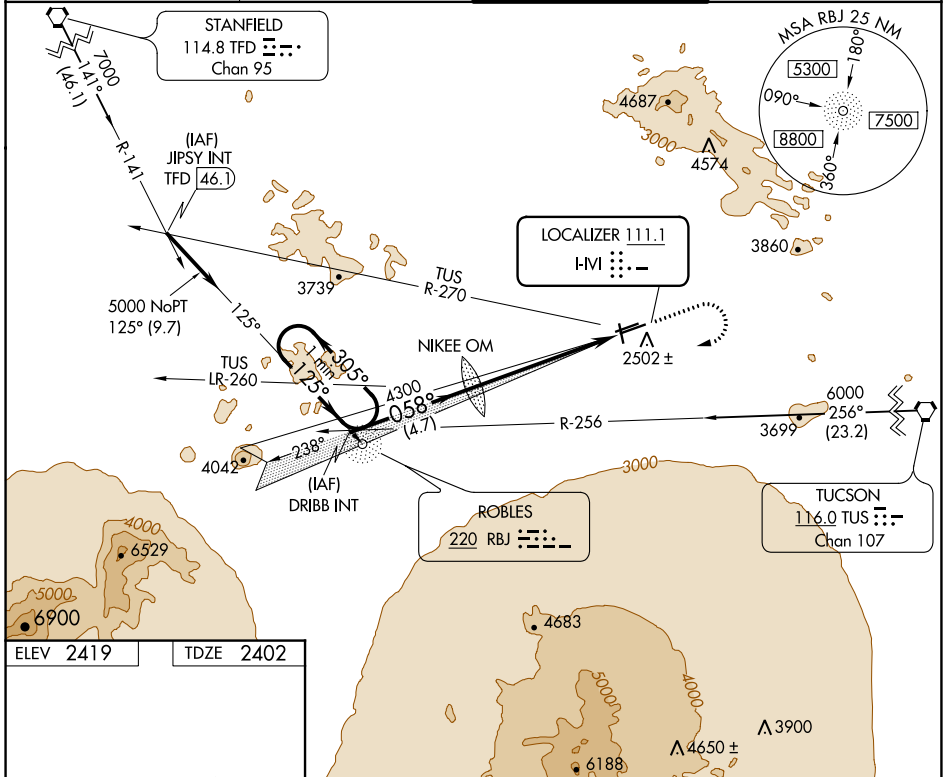
# ILS or LOC RWY 6R

RYAN FLD (RYN)

ADF required.  
 Circling NA for Cat D north of Rwy 24R and east of Rwy 15.

MISSED APPROACH: Climb to 3000, then climbing right turn to 5000 via direct RBJ NDB and 305° bearing RBJ to DRIBB INT and hold.

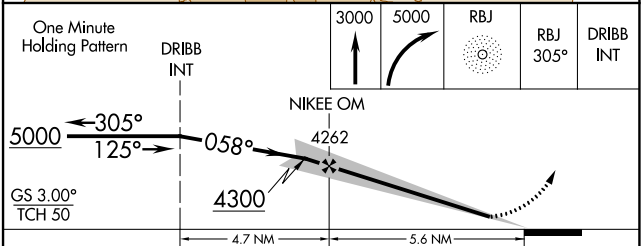
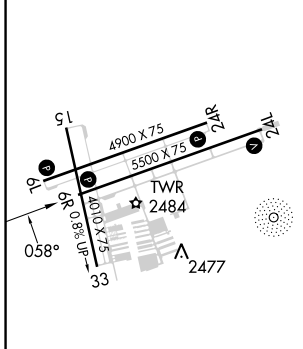
ATIS <b>133.35</b>	TUCSON APP CON <b>128.5 273.6</b>	RYAN TOWER ★ <b>125.8 (CTAF) 0</b>	GND CON <b>118.2</b>
-----------------------	--------------------------------------	---------------------------------------	-------------------------



SW-4, 28 NOV 2024 to 26 DEC 2024

SW-4, 28 NOV 2024 to 26 DEC 2024

ELEV 2419	TDZE 2402
-----------	-----------



MIRL Rwy 6L-24R REIL Rwys 6R and 6L MIRL Rwys 6R-24L and 15-33 FAF to MAP 5.1 NM	3000	5000	RBJ	RBJ 305°	DRIBB INT
One Minute Holding Pattern	DRIBB INT	NIKEE OM			
GS 3.00° TCH 50	5000	4300	4262		
		4.7 NM	5.6 NM		
CATEGORY	A	B	C	D	
S-ILS 6R		2652-1	250 (300-1)		
S-LOC 6R	2900-1	498 (500-1)	2900-1¼ 498 (500-1¼)	2900-1½ 498 (500-1½)	
<input checked="" type="checkbox"/> CIRCLING	2960-1	541 (600-1)	3040-1¾ 621 (700-1¾)	3320-3 901 (1000-3)	