

| | | | |
|--|------------------------|-----------------------------|---|
| WAAS CH 60929 W29A | APP CRS 289° | Rwy Idg TDZE Apt Elev | 6000 308 310 |
|--|------------------------|-----------------------------|---|

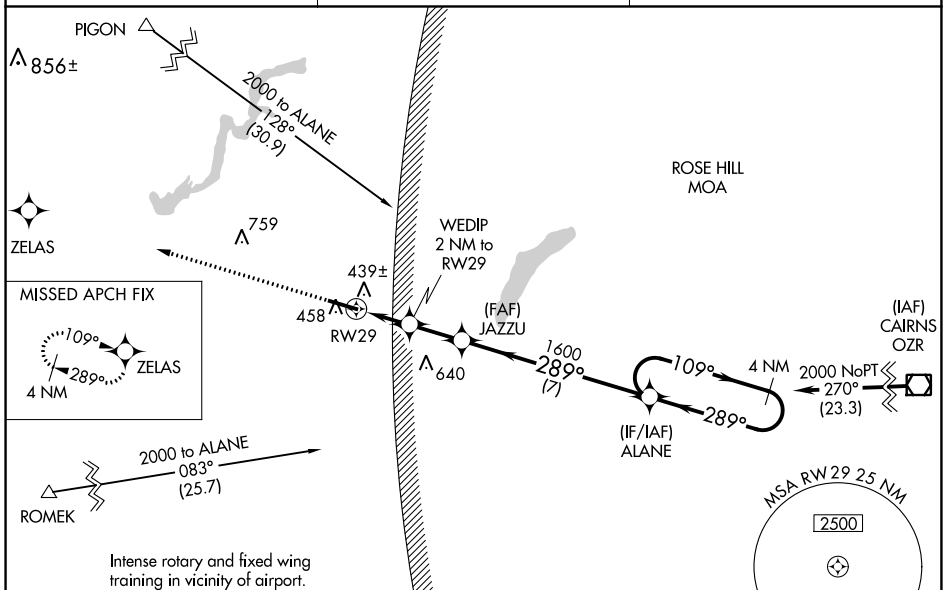
RNAV (GPS) RWY 29

SOUTH ALABAMA RGNL AT BILL BENTON FLD (79J)

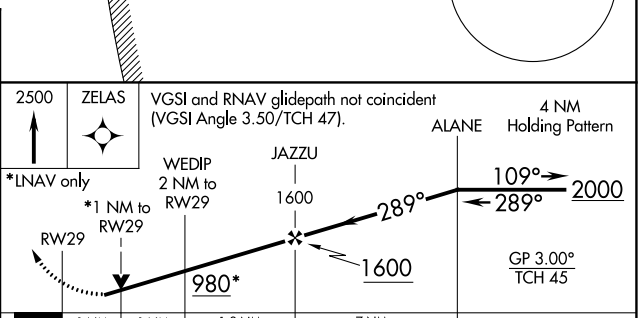
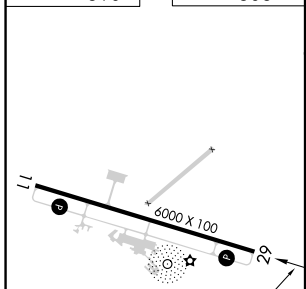
⚠ For uncompensated Baro-VNAV systems, LNAV/VNAV NA below -15°C (5°F) or above 54°C (130°F). DME/DME RNP-0.3 NA. Helicopter visibility reduction below ¾ SM NA. When local altimeter setting not received, use Cairns AAF (Fort Novosel) altimeter setting and increase all DA 82 feet, all MDA 100 feet. Increase LPV and LNAV/VNAV visibilities ¾ mile, LNAV and Circling Cat C and D ¼ mile. Baro-VNAV and VDP NA when using Cairns AAF (Fort Novosel) altimeter setting.

MISSED APPROACH: Climb to 2500 direct ZELAS and hold.

| | | |
|------------------------|---|---------------------------------|
| ASOS 134.875 | CAIRNS APP CON ★ 133.45 239.275 | UNICOM 122.8 (CTAF) 0 |
|------------------------|---|---------------------------------|



ELEV 310 TDZE 308



| CATEGORY | A | B | C | D |
|--------------|-------|-------------|------------------------|----------------------|
| LPV DA | 630-1 | | 322 (400-1) | |
| LNAV/VNAV DA | 628-1 | | 320 (400-1) | |
| LNAV MDA | 720-1 | 412 (500-1) | 720-1½ | 412 (500-1½) |
| CIRCLING | 820-1 | 510 (600-1) | 860-1½ 550 (600-1½) | 940-2 630 (700-2) |

MIRL Rwy 11-29
REIL Rwy 11 and 29

SE-4, 28 NOV 2024 to 26 DEC 2024

SE-4, 28 NOV 2024 to 26 DEC 2024