

WAAS CH <b>45800</b> <b>W16A</b>	APP CRS <b>163°</b>	Rwy Idg TDZE <b>1202</b> Apt Elev <b>1204</b>	<b>5500</b>
--	------------------------	---	-------------

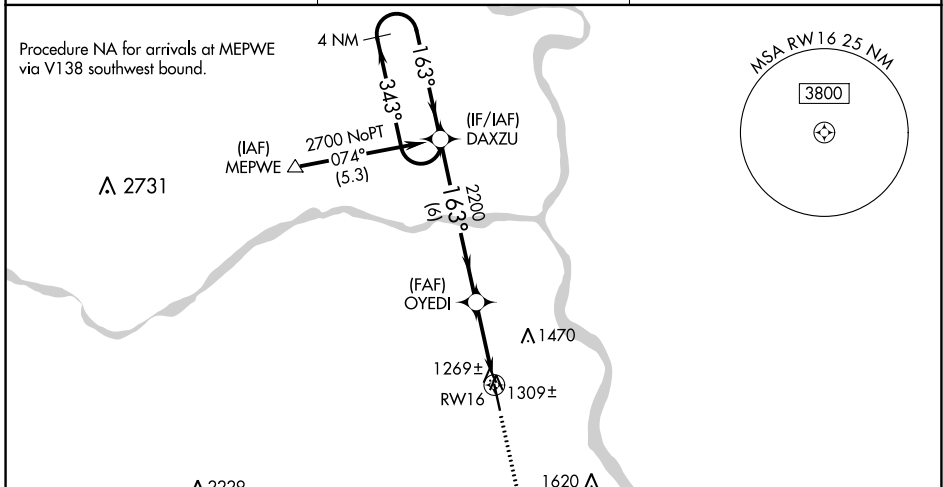
# RNAV (GPS) RWY 16

PLATTSMOUTH MUNI/DOUGLAS V DUEY FLD (PMV)

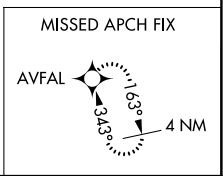
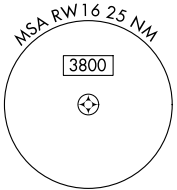
**⚠** When local altimeter setting not received, use Offutt AFB altimeter setting, increase all DAs 45 feet and all MDAs 60 feet, increase LNAV/VNAV all Cats visibility ¼ mile. VDP NA when using Offutt AFB altimeter setting. Baro-VNAV NA when using Offutt AFB altimeter setting. For uncompensated Baro-VNAV systems, LNAV/VNAV NA below -17°C (2°F) or above 54°C (130°F). DME/DME RNP-0.3 NA.

MISSED APPROACH: Climb to 2800 direct AVFAL and hold.

AWOS-3 <b>118.975</b>	OMAHA APP CON <b>120.1 354.05</b>	UNICOM <b>122.7</b> (CTAF) <b>📻</b>
--------------------------	--------------------------------------	--

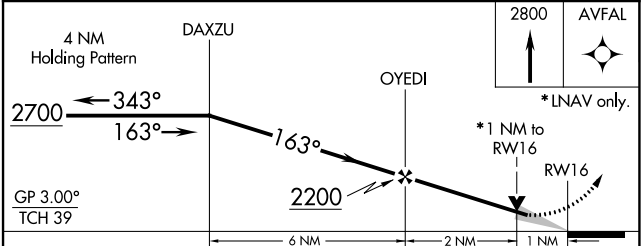
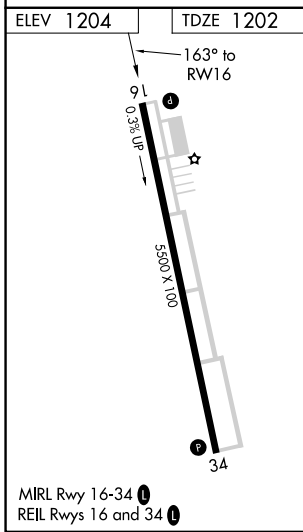


Procedure NA for arrivals at MEPWE via V138 southwest bound.



NC-2, 28 NOV 2024 to 26 DEC 2024

NC-2, 28 NOV 2024 to 26 DEC 2024



CATEGORY	A	B	C	D
LPV DA	1452-1	250 (300-1)		NA
LNAV/VNAV DA	1539-1¼	337 (400-1¼)		NA
LNAV MDA	1560-1	358 (400-1)		NA
CIRCLING	1640-1 436 (500-1)	1660-1 456 (500-1)		NA