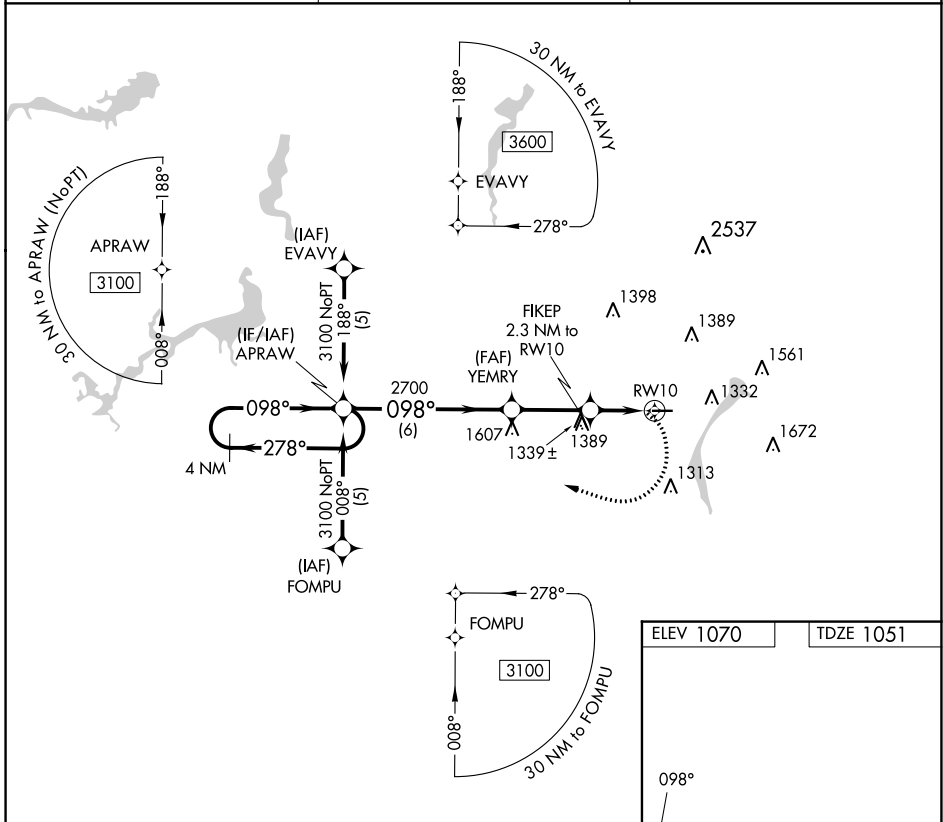


| | |
|------------------------|---|
| APP CRS 098° | Rwy Idg 3664 TDZE 1051 Apt Elev 1070 |
|------------------------|---|

RNAV (GPS) RWY 10

YOUNGSTOWN ELSER METRO (4G4)

| | | |
|--|---------------------------|---|
| RNP APCH. | | MISSED APPROACH: Climbing right turn to 3100 direct APRAW and hold. |
| ▼ Rwy 10 helicopter visibility reduction below 1 SM NA. Obtain local altimeter setting on CTAF; when not received, use New Castle altimeter setting and increase all MDA 40 feet. Procedure NA at night. | ▲ NA | |
| YOUNGSTOWN APP CON ★ 133.95 322.3 | CLNC DEL 119.25 | UNICOM 123.05 (CTAF) |



EC-2, 28 NOV 2024 to 26 DEC 2024

EC-2, 28 NOV 2024 to 26 DEC 2024

| | |
|-----------|-----------|
| ELEV 1070 | TDZE 1051 |
|-----------|-----------|

| | | | | |
|----------|--------|-------------|----|---|
| CATEGORY | A | B | C | D |
| LNAV MDA | 1660-1 | 609 (600-1) | NA | |

MIRL Rwy 10-28
REIL Rwy 10 and 28

