

| | | |
|---------------------------------|------------------------|---|
| WAAS CH 73022 W32A | APP CRS 327° | Rwy Idg 4600 TDZE 1145 Apt Elev 1145 |
|---------------------------------|------------------------|---|

RNAV (GPS) RWY 32

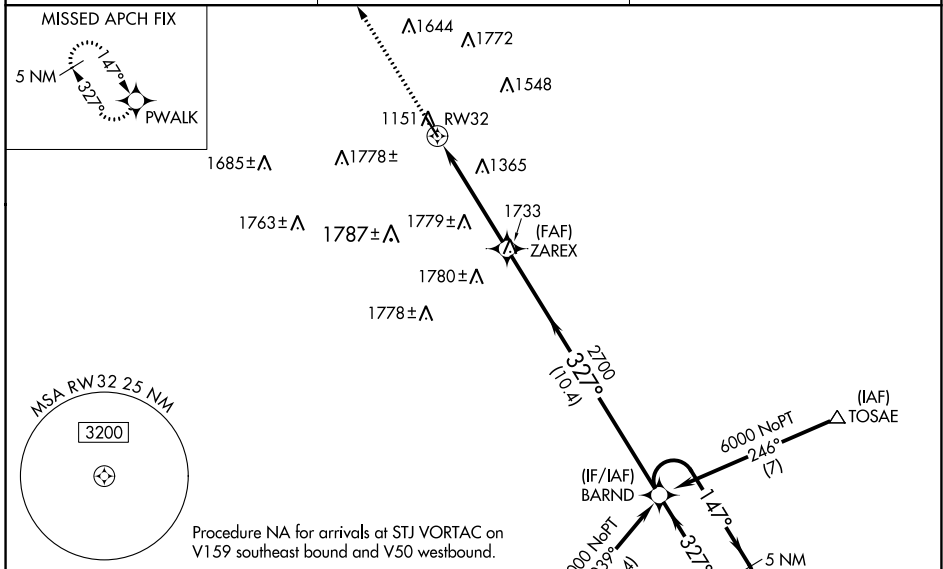
NORTHWEST MISSOURI RGNL (EVU)

RNP APCH - GPS.

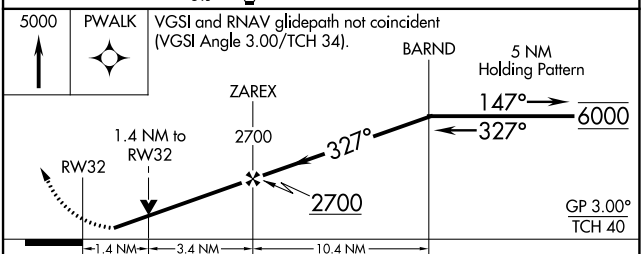
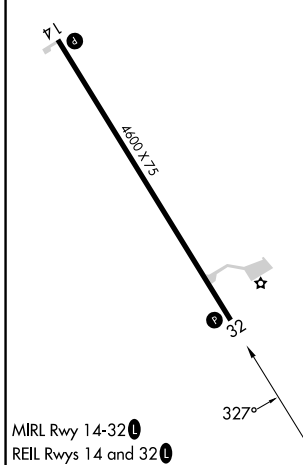
NA Circling NA east of Rwy 14-32. For uncompensated Baro-VNAV systems, LNAV/VNAV NA below -17°C or above 54°C. Rwy 32 helicopter visibility reduction below ¾ SM NA. When local altimeter setting not received, use St. Joseph altimeter setting; increase LPV DA to 1520 feet, LNAV/VNAV DA to 1653 feet and LNAV/VNAV visibility all Cats ¼ SM; increase all MDAs 140 feet and LNAV visibility Cat C ⅜ SM. Baro-VNAV and VDP NA when using St. Joseph altimeter setting.

MISSED APPROACH: Climb to 5000 direct PWALK and hold, continue climb-in-hold to 5000.

| | | |
|----------------------------|--|---------------------------------|
| AWOS-3PT 118.225 | MINNEAPOLIS CENTER 119.6 290.4 | UNICOM 122.8 (CTAF) 1 |
|----------------------------|--|---------------------------------|



| | |
|-----------|-----------|
| ELEV 1145 | TDZE 1145 |
|-----------|-----------|



| CATEGORY | A | B | C | D |
|--------------|----------------------|-------------|-------------------------|----|
| LPV DA | 1395-1 250 (300-1) | | | NA |
| LNAV/VNAV DA | 1528-1½ 383 (400-1½) | | | NA |
| LNAV MDA | 1620-1 | 475 (500-1) | 1620-1¾ 475 (500-1¾) | NA |
| CIRCLING | 1620-1 | 475 (500-1) | 2120-3 975 (1000-3) | NA |

NC-3, 28 NOV 2024 to 26 DEC 2024

NC-3, 28 NOV 2024 to 26 DEC 2024