

WAAS CH 45520 W33A	APP CRS 326°	Rwy Idg 3999 TDZE 984 Apt Elev 984
--	------------------------	---

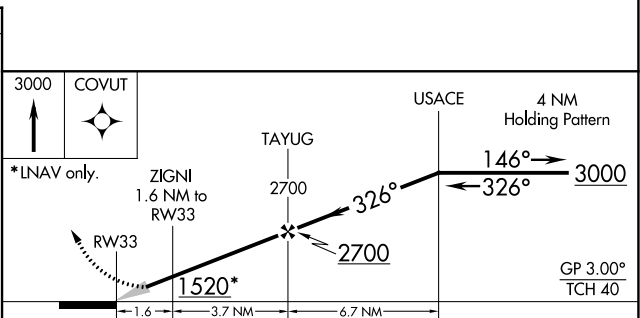
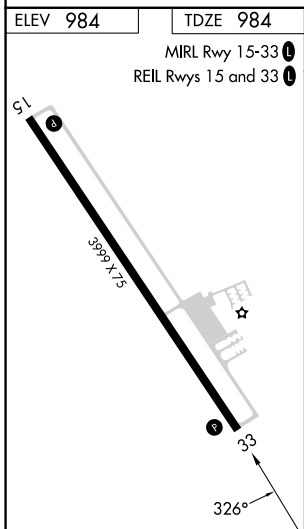
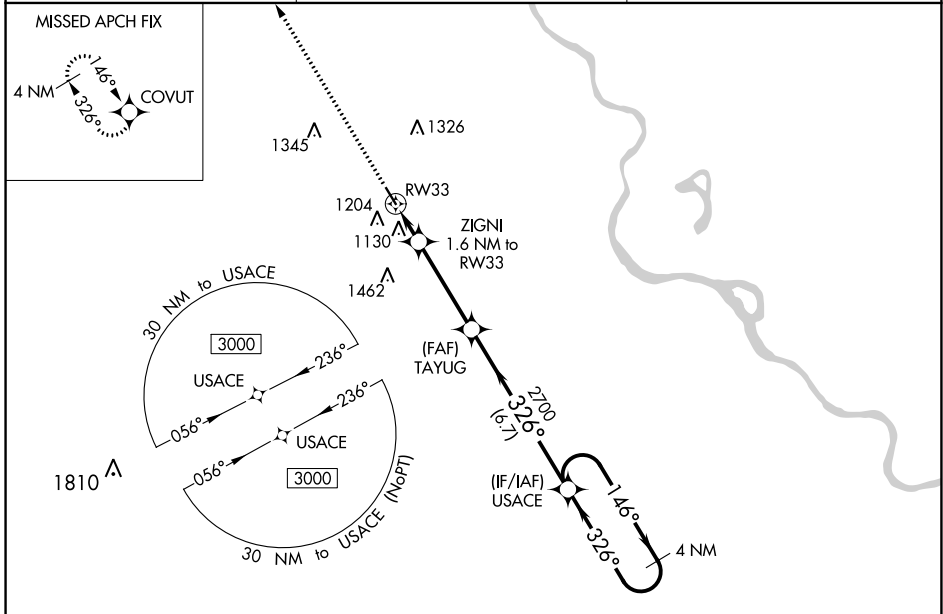
RNAV (GPS) RWY 33

BRENNER FLD (FNB)

NA For uncompensated Baro-VNAV systems, LNAV/VNAV NA below -21°C (-5°F) or above 54°C (130°F). DME/DME RNP-0.3 NA. VDP and Baro-VNAV NA when using Nebraska City altimeter setting. When local altimeter not received, use Nebraska City altimeter setting and increase all DA 104 feet and all MDA 120 feet.

MISSED APPROACH: Climb to 3000 direct COVUT and hold.

ASOS 119.275	ST JOSEPH APP CON 120.35 360.8	UNICOM 122.8 (CTAF)
------------------------	--	-------------------------------



CATEGORY	A	B	C	D
LPV DA	1234-1	250 (300-1)		NA
LNAV/VNAV DA	1276-1	292 (300-1)		NA
LNAV MDA	1380-1	396 (400-1)		NA
C CIRCLING	1560-1	576 (600-1)		NA

NC-2, 28 NOV 2024 to 26 DEC 2024

NC-2, 28 NOV 2024 to 26 DEC 2024