

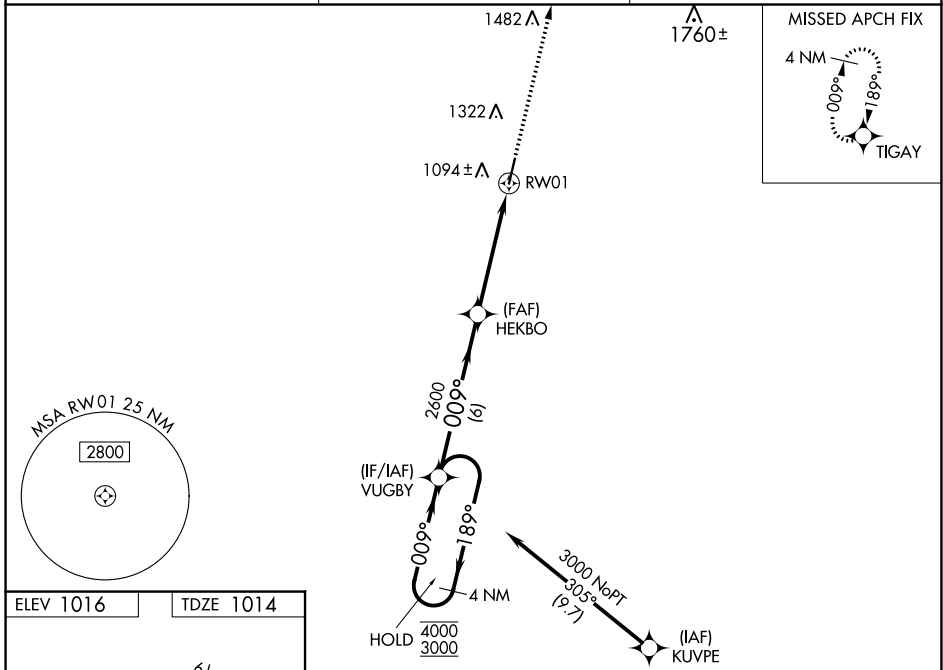
| | | | |
|--|------------------------|-----------------------------|---|
| WAAS CH 86628 W01A | APP CRS 009° | Rwy Idg TDZE Apt Elev | 5501 1014 1016 |
|--|------------------------|-----------------------------|---|

RNAV (GPS) RWY 1

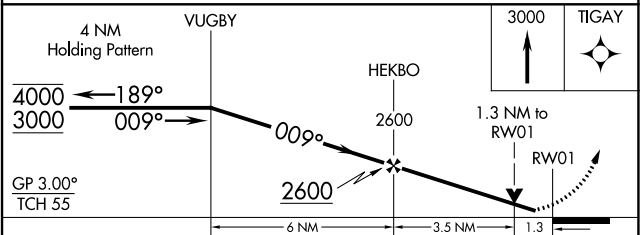
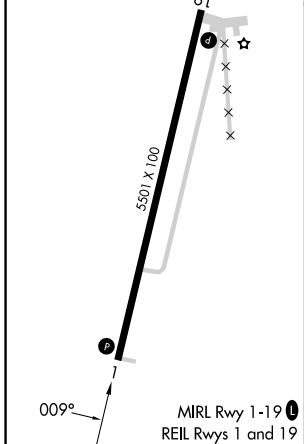
ALLEN COUNTY (K88)

| | |
|---|--|
| RNP APCH - GPS. | <p>MISSED APPROACH: Climb to 3000 direct TIGAY and hold.</p> |
| <p>Baro-VNAV and VDP NA when using Chanute altimeter setting. For uncompensated Baro-VNAV systems, LNAV/VNAV NA below -17°C or above 54°C. Rwy 1 helicopter visibility reduction below ¾ SM NA. When local altimeter setting not received, use Chanute altimeter setting: increase LPV DA to 1299 feet; increase LNAV/VNAV DA to 1324 feet; increase all MDAS 40 feet and visibility Circling Cat C ¼ SM.</p> | |

| | | |
|----------------------------|---|---------------------------------|
| AWOS-3PT 128.325 | KANSAS CITY CENTER 127.725 270.25 | UNICOM 122.8 (CTAF) 0 |
|----------------------------|---|---------------------------------|



| | |
|-----------|-----------|
| ELEV 1016 | TDZE 1014 |
|-----------|-----------|



| CATEGORY | A | B | C | D |
|--------------|-----------------------|-----------------------|-------------------------------|----|
| LPV DA | | 1264-1 | 250 (300-1) | NA |
| LNAV/VNAV DA | | 1289-1 | 275 (300-1) | NA |
| LNAV MDA | 1480-1 | 466 (500-1) | 1480-1 3/8 466 (500-1 3/8) | NA |
| CIRCLING | 1480-1 464 (500-1) | 1660-1 644 (700-1) | 1660-1 3/4 644 (700-1 3/4) | NA |

NC-2, 28 NOV 2024 to 26 DEC 2024

NC-2, 28 NOV 2024 to 26 DEC 2024