

LOC I-HNZ 109.75	APP CRS 060°	Rwy Idg 5501
		TDZE 526
		Apt Elev 526

LOC RWY 6

HENDERSON/OXFORD (HNZ)

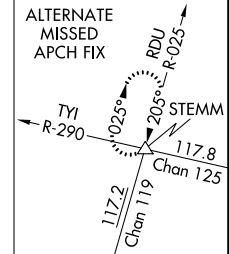
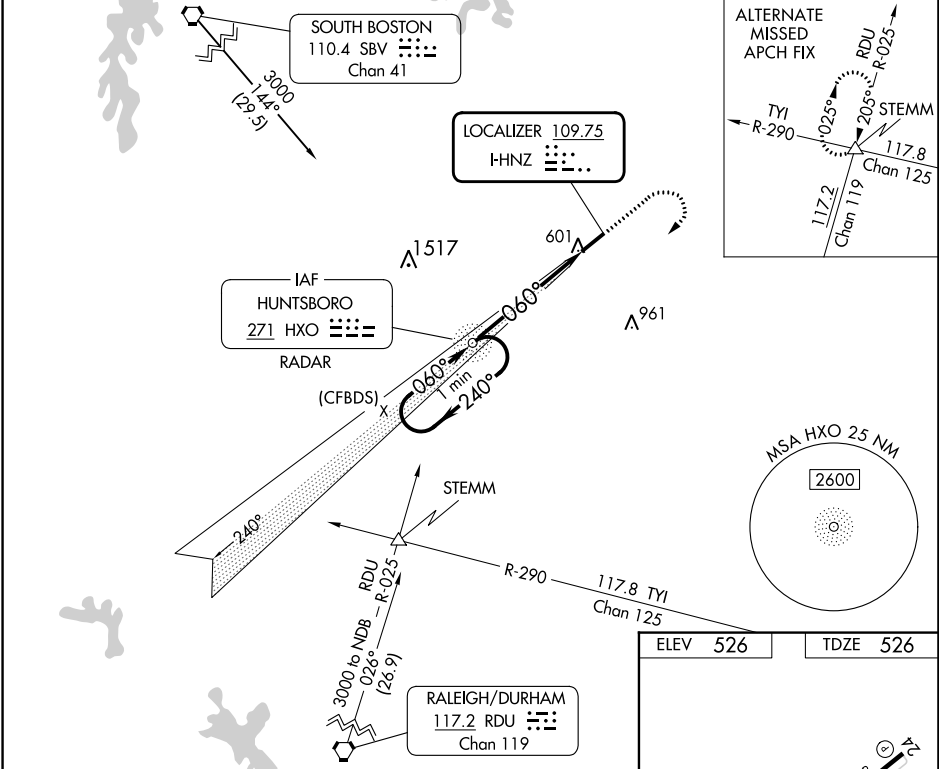
ADF or RADAR required. ADF or RADAR required for procedure entry.

▼ Rwy 6 helicopter visibility reduction below ¼ SM NA. When local altimeter setting not received, use Roxboro altimeter setting and increase all MDA 80 feet; increase S-6 Cat C/D visibility ½ SM and Circling Cat C and D visibility ¼ SM.

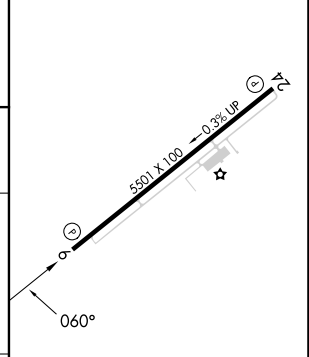
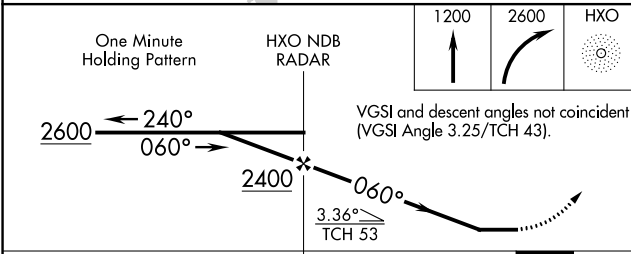
▲

MISSED APPROACH: Climb to 1200 then climbing right turn to 2600 direct HXO NDB/RADAR and hold.

AWOS-3 118.625	RALEIGH APP CON 132.35 256.9	UNICOM 122.8 (CTAF) 0
--------------------------	--	---------------------------------



ELEV 526	TDZE 526
----------	----------



CATEGORY	A	B	C	D
S-6	980-1	454 (500-1)	980-1 3/8	454 (500-1 3/8)
CIRCLING	980-1	454 (500-1)	1100-1 1/2 574 (600-1 1/2)	1280-2 1/2 754 (800-2 1/2)

REIL Rwy 6 0	MIRL Rwy 6-24 0				
FAF to MAP 5.2 NM					
Knots	60	90	120	150	180
Min:Sec	5:12	3:28	2:36	2:05	1:44

SE-2, 28 NOV 2024 to 26 DEC 2024

SE-2, 28 NOV 2024 to 26 DEC 2024