

HI-ILS W or LOC W RWY 13

LOC/DME I-NOG 110.5 Chan 42	APCH CRS 130°	Rwy Idg TDZE Arprt Elev	8001 257 257
-------------------------------------------------	-------------------------	-------------------------------	-----------------------------------------

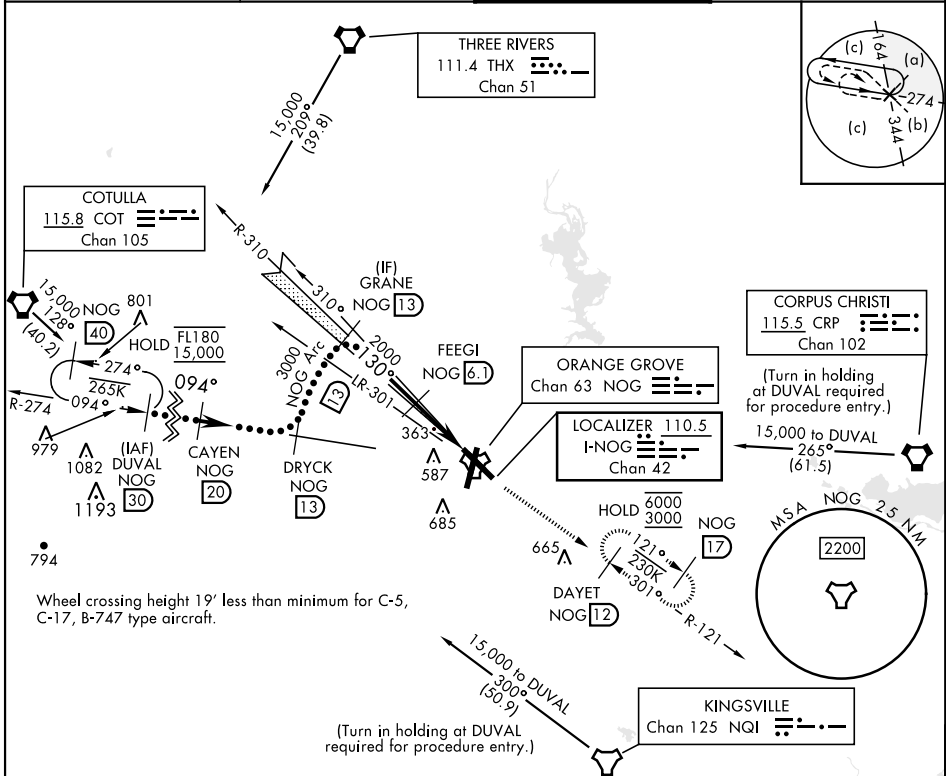
[USN]

ORANGE GROVE NALF (KNOG)

TACAN required

MISSED APPROACH: Climb to 700 then climbing to 3000 intercept NOG TACAN R-121 to DAYET and hold.

ATIS ★ 254.35	KINGSVILLE APP CON 119.90 290.45	TOWER ★ 128.4 281.425	GND CON 229.4
-------------------------	--------------------------------------------	---------------------------------	-------------------------



Wheel crossing height 19' less than minimum for C-5, C-17, B-747 type aircraft.

(Turn in holding at DUVAL required for procedure entry.)

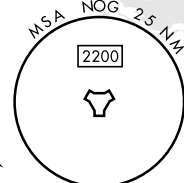
CORPUS CHRISTI
115.5 CRP
Chan 102

ORANGE GROVE
Chan 63 NOG

LOCALIZER 110.5
I-NOG
Chan 42

(Turn in holding at DUVAL required for procedure entry.)

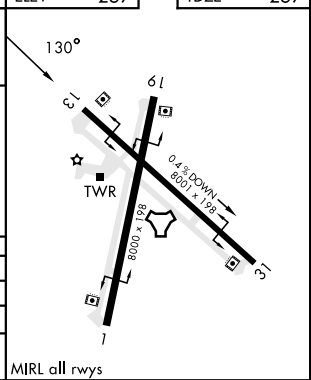
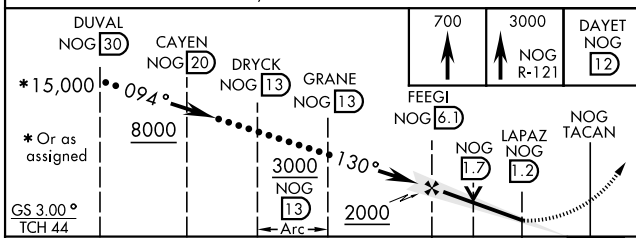
HOLD 6000
3000 NOG



KINGSVILLE
Chan 125 NOG

EMERG SAFE ALT 100 NM 16,200

ELEV 257	TDZE 257
----------	----------



CATEGORY	C	D	E
S-ILS 13	457-1	200 (200-1)	
S-LOC 13	620-1	363 (400-1)	
CIRCLING	920-1¾ 663 (700-1¾)	1000-2½ 743 (800-2½)	1000-2¾ 743 (800-2¾)

MIRL all rwys

HI-ILS W or LOC W RWY 13

SC-3, 28 NOV 2024 to 26 DEC 2024

SC-3, 28 NOV 2024 to 26 DEC 2024