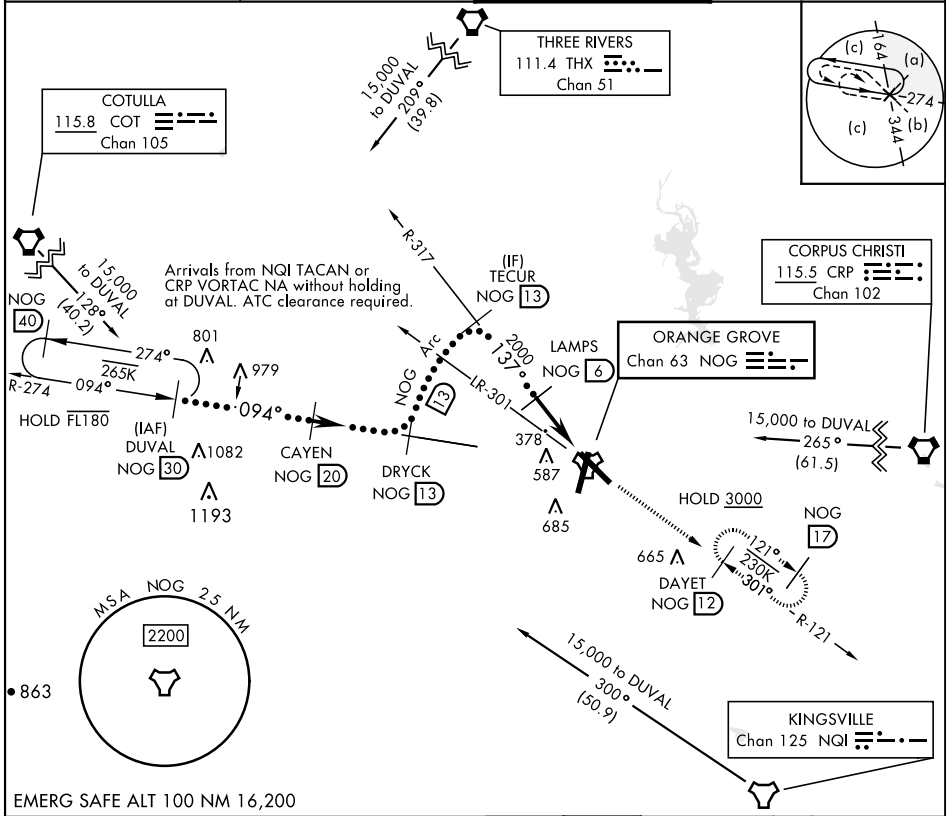


HI-TACAN Y RWY 13

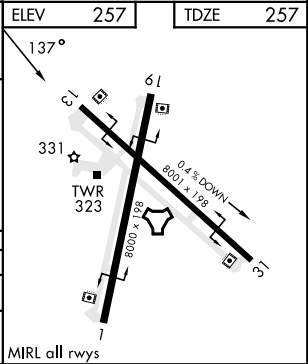
TACAN Chan 63	APCH CRS 137°	Rwy Ldg TDZE Arpt Elev 8001 257 257	[USN]	ORANGE GROVE NALF (KNOG)
-------------------------	-------------------------	---	-------	--------------------------

MISSED APPROACH: Climb to 700, then climb to 3000 intercept NOG TACAN R-121 to DAYET and hold.

ATIS ★ 254.35	KINGSVILLE APP CON 119.90 290.45	TOWER ★ 128.4 281.425	GND CON 229.4
-------------------------	--	---------------------------------	-------------------------



DUVAL NOG 30	CAYEN NOG 20	DRYCK NOG 13	TECUR NOG 13	LAMPS NOG 6	NOG 1.8	NOG TACAN	SPARS NOG 1.2	ELEV 257	TDZE 257
* 15,000							3000 NOG R-121	DAYET NOG 12	
* Or as assigned							8000		
CATEGORY	C	D	E						
S-13	640-1 1/8	383	(400-1 1/8)						
CIRCLING	920-1 3/4 663 (700-1 3/4)	1000-2 1/2 743 (800-2 1/2)	1000-2 3/4 743 (800-2 3/4)						



SC-3, 28 NOV 2024 to 26 DEC 2024

SC-3, 28 NOV 2024 to 26 DEC 2024

HI-TACAN Y RWY 13