

VORTAC LNK 116.1 Chan 108	APP CRS 196°	Rwy Idg 4201 TDZE 1500 Apt Elev 1500
---	------------------------	---

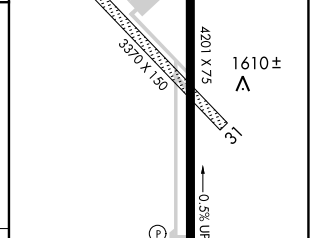
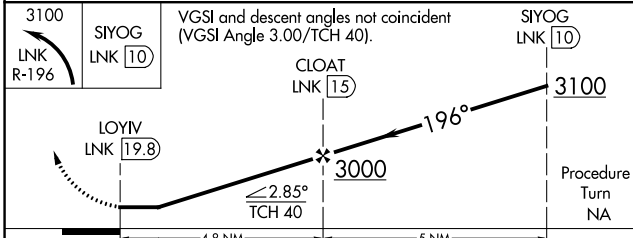
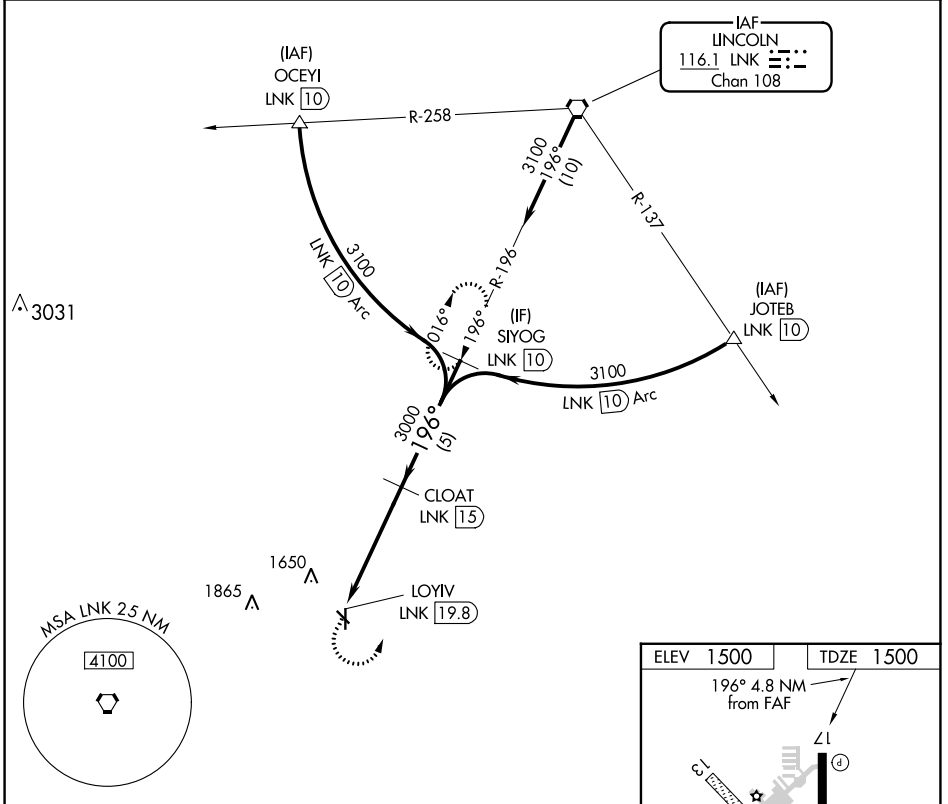
VOR/DME RWY 17

CRETE MUNI (CEK)

⚠ NA Rwy 17 Straight-in and Circling minimums NA at night. Use Lincoln altimeter setting; when not received, use Beateira altimeter setting. Helicopter visibility reduction below 1 SM NA.

MISSED APPROACH: Climbing left turn to 3100 via LNK VORTAC R-196 to SIYOG/10 DME and hold.

OMAHA APP CON 124.0 270.3	UNICOM 122.8 (CTAF)
-------------------------------------	-------------------------------



CATEGORY	A	B	C	D
S-17	2080-1	580 (600-1)		NA
CIRCLING	2140-1	640 (700-1)		NA

HIRL Rwy 17-35
REIL Rwy 17 and 35

NC-2, 28 NOV 2024 to 26 DEC 2024

NC-2, 28 NOV 2024 to 26 DEC 2024