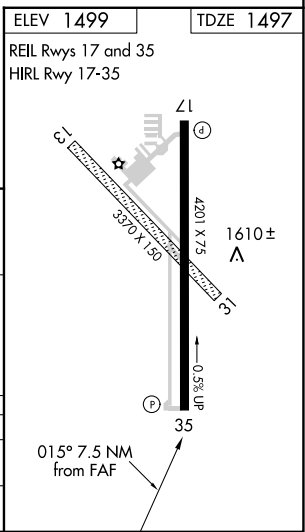
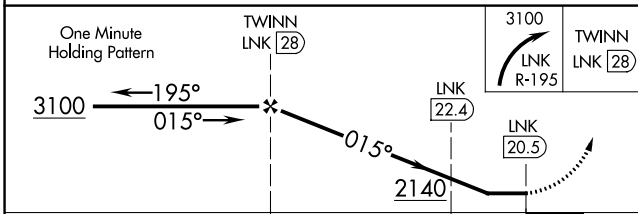
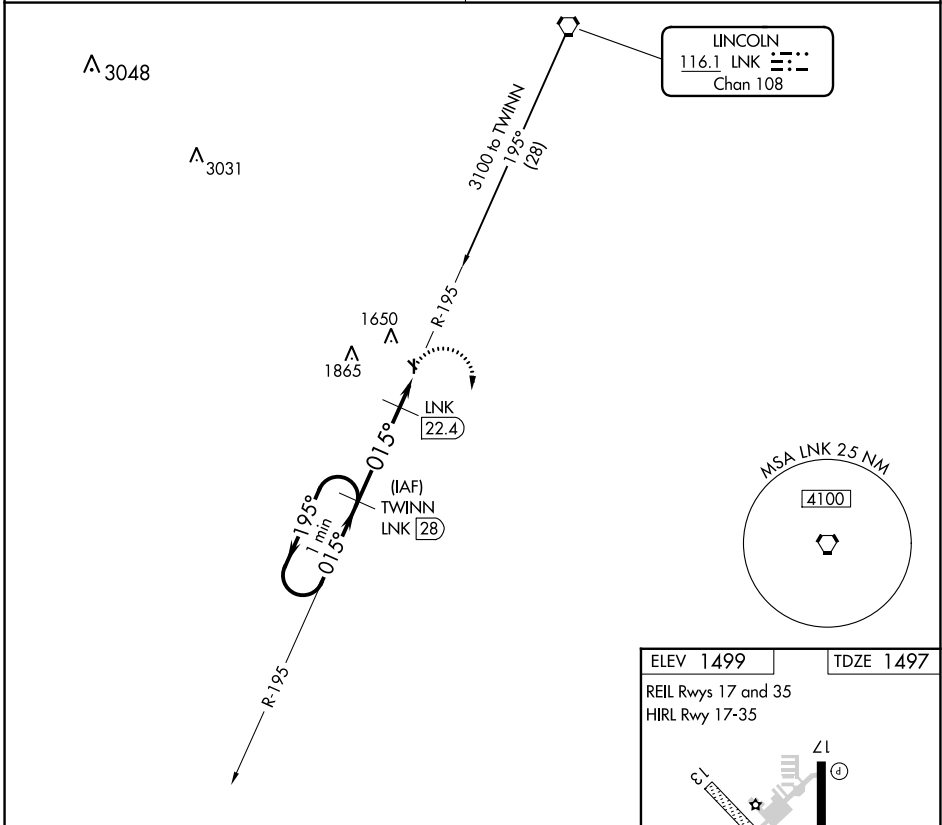


VORTAC LNK <b>116.1</b> Chan <b>108</b>	APP CRS <b>015°</b>	Rwy Idg TDZE Apt Elev	<b>4201</b> <b>1497</b> <b>1499</b>
---	------------------------	-----------------------------	---

# VOR/DME RWY 35

CRETE MUNI (CEK)

<p><b>NA</b> Use Lincoln altimeter setting; when not received, use Beatrice altimeter setting. Visibility reduction by helicopters NA.</p>	<p>MISSED APPROACH: Climbing right turn to 3100 via LNK R-195 to TWINN/LNK 28 DME and hold.</p>
<p>OMAHA APP CON <b>124.0 270.3</b></p>	<p>UNICOM <b>122.8 (CTAF)</b></p>



CATEGORY	A	B	C	D
S-35	2080-1 583 (600-1)	2080-1¼ 583 (600-1¼)	3100 LNK R-195	TWINN LNK 28
CIRCLING	2140-1 641 (700-1)	2140-1¼ 641 (700-1¼)	LNK 22.4	LNK 20.5

NC-2, 28 NOV 2024 to 26 DEC 2024

NC-2, 28 NOV 2024 to 26 DEC 2024