

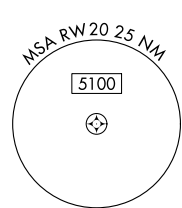
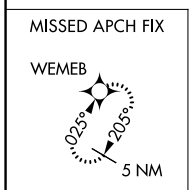
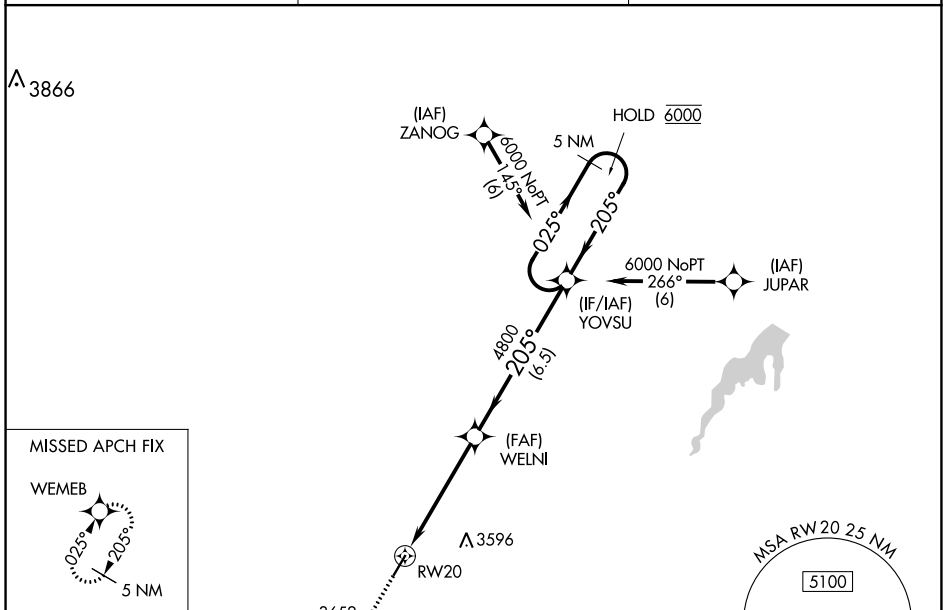
WAAS CH <b>42826</b> <b>W20A</b>	APP CRS <b>205°</b>	Rwy Idg TDZE Apt Elev	<b>4698</b> <b>3196</b> <b>3205</b>
--	------------------------	-----------------------------	---

# RNAV (GPS) RWY 20

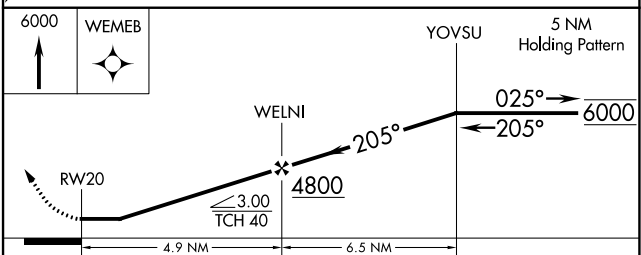
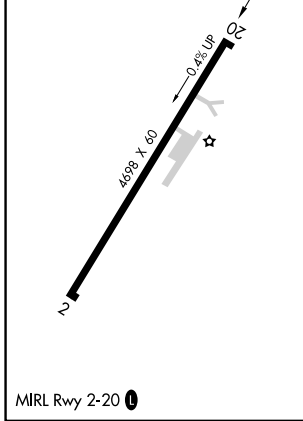
GRUVER MUNI (E19)

RNP APCH - GPS.		MISSED APPROACH: Climb to 6000 direct WEMEB and hold.
▼ ▲ NA	Procedure NA at night. Rwy 20 helicopter visibility reduction below 1 SM NA. Use Guymon altimeter setting, when not received, use Borger altimeter setting and increase all MDAs 40 feet.	

GUY ASOS <b>119.925</b>	ALBUQUERQUE CENTER <b>127.85 285.475</b>	CTAF <b>122.9</b>
----------------------------	---	----------------------



ELEV 3205	TDZE 3196
-----------	-----------



CATEGORY	A	B	C	D
LP MDA	3720-1	524 (600-1)		NA
LNAV MDA	3720-1	524 (600-1)		NA
☑ CIRCLING	3720-1 515 (600-1)	3740-1 535 (600-1)		NA

SC-2, 28 NOV 2024 to 26 DEC 2024

SC-2, 28 NOV 2024 to 26 DEC 2024