

BELOIT, KANSAS

AL-6560 (FAA)

24137

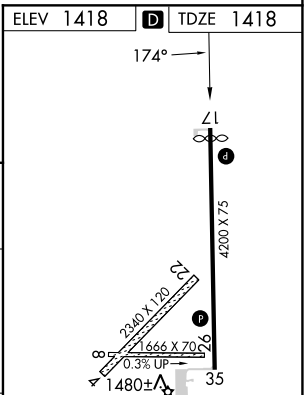
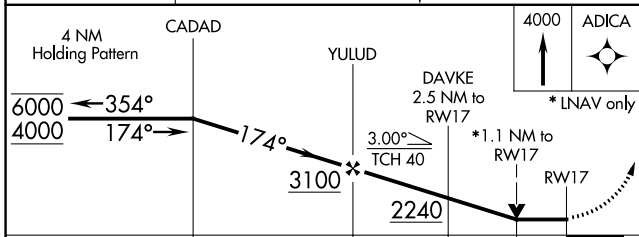
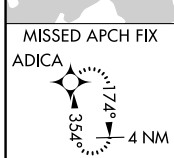
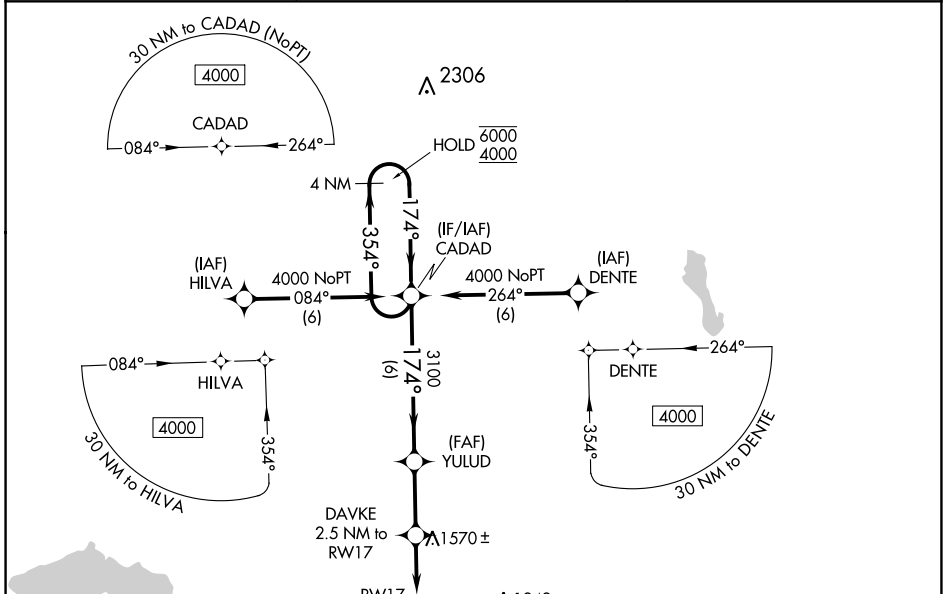
APP CRS	Rwy Idg	<b>4018</b>
<b>174°</b>	TDZE	<b>1418</b>
	Apt Elev	<b>1418</b>

# RNAV (GPS) RWY 17

MORITZ MEML (K61)

RNP APCH.	<p><b>▽</b> Circling Rwy 17 NA at night. Rwy 17 helicopter visibility reduction below 3/4 SM NA. VDP NA when using Concordia altimeter setting. When local altimeter setting not received, use Concordia altimeter setting and increase all MDA 80 feet. Circling Rwy 4, 8, 22, and 26 NA.</p>	<p>MISSED APPROACH: Climb to 4000 direct ADICA and hold.</p>
<b>▲ NA</b>		

AWOS-3PT <b>118.225</b>	KANSAS CITY CENTER <b>134.9 363.2</b>	UNICOM <b>122.8 (CTAF) 0</b>
----------------------------	--	---------------------------------



CATEGORY	A	B	C	D
LNAV MDA	1820-1	402 (500-1)	NA	
<b>C</b> CIRCLING	1880-1 462 (500-1)	2260-1¼ 842 (900-1¼)	NA	

MIRL Rwy 17-35

BELOIT, KANSAS  
Amdt 1 11OCT18

39°28'N-98°08'W

# RNAV (GPS) RWY 17

MORITZ MEML (K61)

NC-2, 28 NOV 2024 to 26 DEC 2024

NC-2, 28 NOV 2024 to 26 DEC 2024