

VORTAC TKO	APP CRS	Rwy Idg	<b>4018</b>
<b>109.8</b>	<b>153°</b>	TDZE	<b>1418</b>
Chan <b>35</b>		Apt Elev	<b>1418</b>

# VOR RWY 17

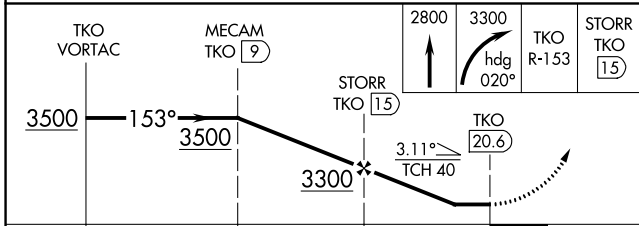
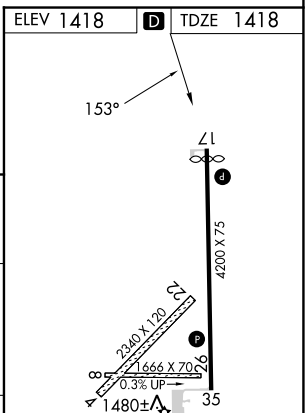
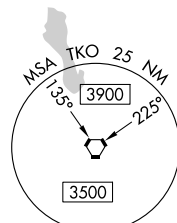
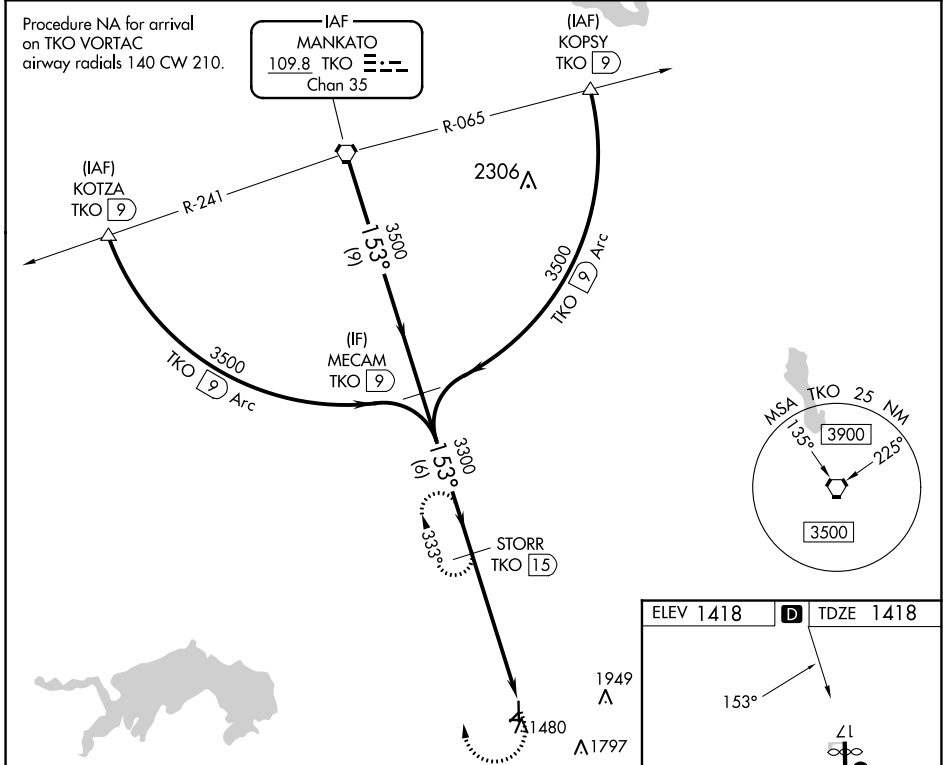
MORITZ MEML (K61)

DME required. DME required for procedure entry.

**NA** Rwy 17 helicopter visibility reduction below 1 SM NA. Circling Rwy 4, 8, 22 and 26 NA. Straight-in Rwy 17 NA at night, Circling Rwy 17 NA at night. When local altimeter setting not received, use Concordia altimeter setting and increase all MDA 80 feet and all Cat C visibilities ¼ SM.

MISSED APPROACH: Climb to 2800 then climbing right turn to 3300 on heading 020° and TKO R-153 to STORR/15 DME and hold.

AWOS-3PT <b>118.225</b>	KANSAS CITY CENTER <b>134.9 363.2</b>	UNICOM <b>122.8 (CTAF) 0</b>
----------------------------	--	---------------------------------



CATEGORY	A	B	C	D
S-17	2040-1	622 (700-1)	2040-1¾ 622 (700-1¾)	NA
<b>C</b> CIRCLING	2040-1 622 (700-1)	2260-1¼ 842 (900-1¼)	2260-2½ 842 (900-2½)	NA

MIRL Rwy 17-35

NC-2, 28 NOV 2024 to 26 DEC 2024

NC-2, 28 NOV 2024 to 26 DEC 2024