

| | | |
|-------------|----------|-------------|
| APP CRS | Rwy Idg | 3200 |
| 255° | TDZE | 464 |
| | Apt Elev | 464 |

RNAV (GPS) RWY 26

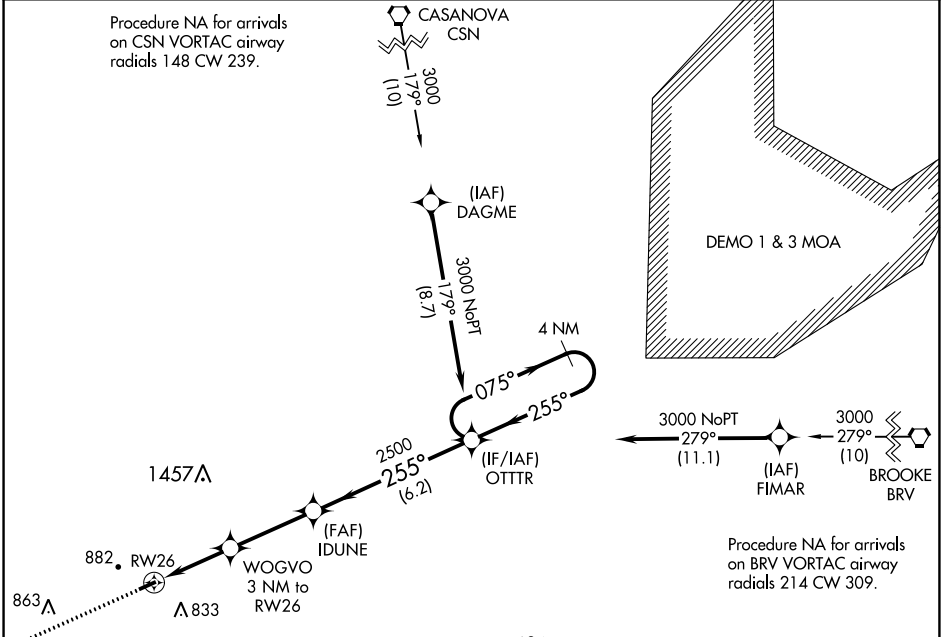
ORANGE COUNTY (OMH)

RNP APCH - GPS.

⚠ When local altimeter setting not received, use Charlottesville altimeter setting and increase all MDA 80 feet. Rwy 26 helicopter visibility reduction below 1 SM NA. Procedure NA at night.

MISSED APPROACH: Climb to 3100 direct ZAVRO and hold.

| | | |
|---------------------------------|---|--|
| AWOS-3 118.075 | POTOMAC APP CON 132.85 323.125 | UNICOM 122.8 (CTAF) 0 |
|---------------------------------|---|--|

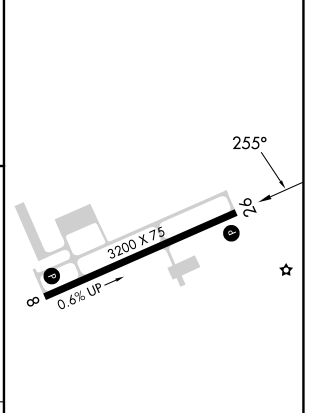
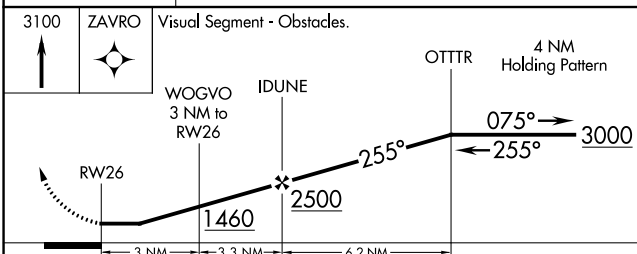


NE-3, 28 NOV 2024 to 26 DEC 2024

NE-3, 28 NOV 2024 to 26 DEC 2024



| | |
|----------|----------|
| ELEV 464 | TDZE 464 |
|----------|----------|



| CATEGORY | A | B | C | D |
|-----------------|---------|--------------|---|----|
| LNAV MDA | 980-1 | 516 (600-1) | | NA |
| CIRCLING | 1300-1¼ | 836 (900-1¼) | | NA |

MIRL Rwy 8-26 0
REIL Rwy 8 and 26 0