

WAAS CH <b>40044</b> <b>W34A</b>	APP CRS <b>347°</b>	Rwy Idg TDZE Apt Elev	<b>2797</b> <b>1363</b> <b>1363</b>
--	------------------------	-----------------------------	---

# RNAV (GPS) RWY 34

ROCK RAPIDS MUNI (R.R.Q)

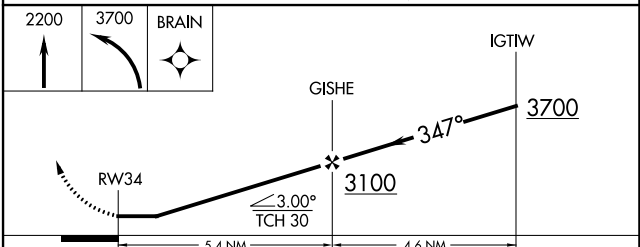
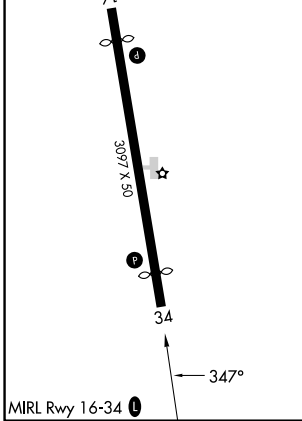
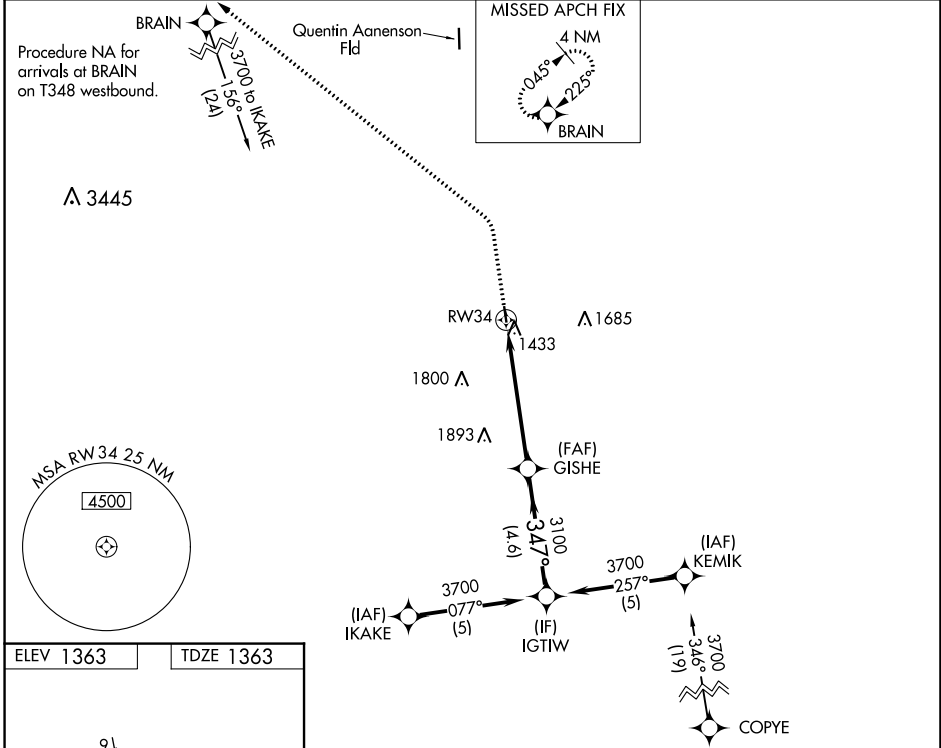
RNP APCH - GPS.

**NA** Procedure NA at night. Rwy 34 helicopter visibility reduction below 1 SM NA. Use Sioux Falls, SD altimeter setting.

MISSED APPROACH: Climb to 2200 then climbing left turn to 3700 direct BRAIN and hold.

**SIOUX FALLS APP CON \***  
**126.9 284.725**

**UNICOM**  
**122.8(CTAF) 0**



CATEGORY	A	B	C	D
LP MDA	1960-1	597 (600-1)		NA
LNAV MDA	1960-1	597 (600-1)		NA
<b>C</b> CIRCLING	1960-1	2040-1 677 (700-1)		NA

NC-3, 28 NOV 2024 to 26 DEC 2024

NC-3, 28 NOV 2024 to 26 DEC 2024