

RNAV 1 - DME/DME/IRU or GPS.  
RADAR required.

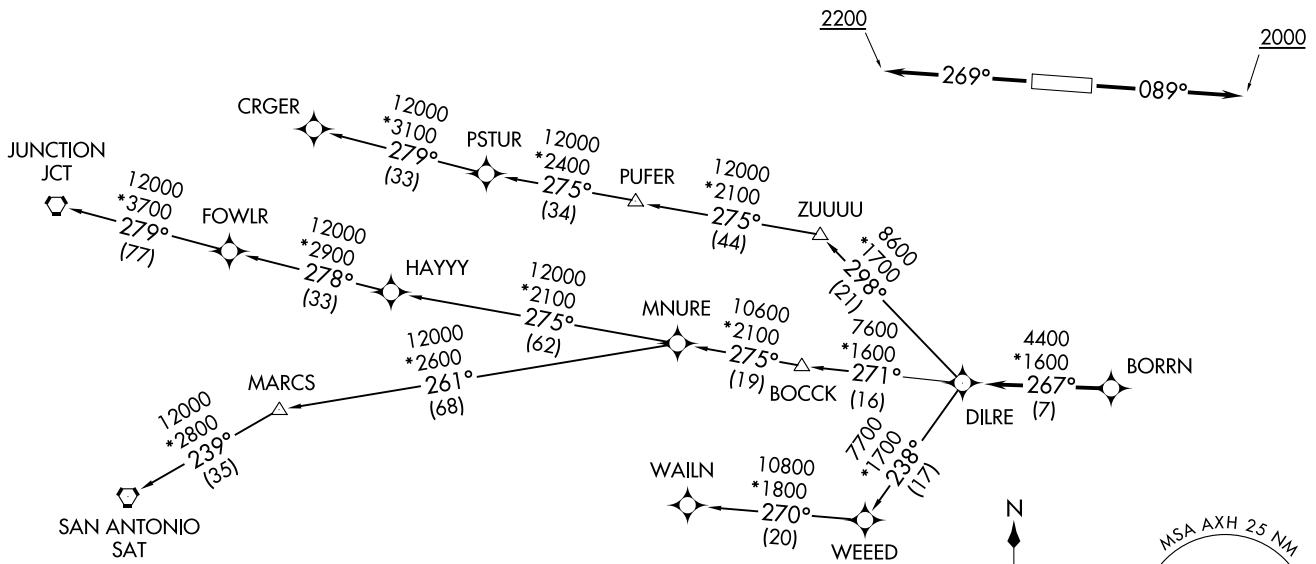
**TOP ALTITUDE:  
ASSIGNED BY ATC**

AWOS-3  
123.625  
CTAF  
123.0  
CLNC DEL  
120.8  
HOUSTON DEP CON  
123.8 257.7

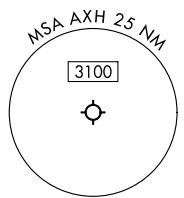
**TAKEOFF MINIMUMS**  
Rwys 9, 27: Standard with minimum  
climb of 500'/NM to 580.

BORRN SIX DEPARTURE (RNAV)  
(BORRN6.BORRN) 30NOV23  
HOUSTON/SOUTHWEST (AXH)  
HOUSTON, TEXAS

(BORRN6.BORRN) 23334  
AL6575 (FAA)  
HOUSTON/SOUTHWEST (AXH)  
HOUSTON, TEXAS



NOTE: CRGER-TRANSITION ATC assigned only  
for aircraft departing 54T, AXH, EFD, GLS,  
HPY, IWS, LBX, LVJ, SGR, TME, T00, T41.



(NARRATIVE ON FOLLOWING PAGE)

NOTE: Chart not to scale.

# BORRN SIX DEPARTURE (RNAV)



## DEPARTURE ROUTE DESCRIPTION

TAKEOFF RUNWAY 9: Climb on heading 089° to 2000, for RADAR vectors to BORRN, thence. . . .

TAKEOFF RUNWAY 27: Climb on heading 269° to 2200, for RADAR vectors to BORRN, thence. . . .

. . . .on track 267° to DILRE, then on (transition). Maintain ATC assigned altitude. Expect filed altitude 10 minutes after departure.

CRGER TRANSITION (BORRN6.CRGER)

JUNCTION TRANSITION (BORRN6.JCT)

MNURE TRANSITION (BORRN6.MNURE)

SAN ANTONIO TRANSITION (BORRN6.SAT)

WAILN TRANSITION (BORRN6.WAILN)

SC-5, 28 NOV 2024 to 26 DEC 2024

SC-5, 28 NOV 2024 to 26 DEC 2024