

RADAR and DME required.

**TOP ALTITUDE:
ASSIGNED BY ATC**

TAKEOFF MINIMUMS
Rwys 9, 27: Standard.

(PSX3.PSX) 24137
PALACIOS THREE DEPARTURE

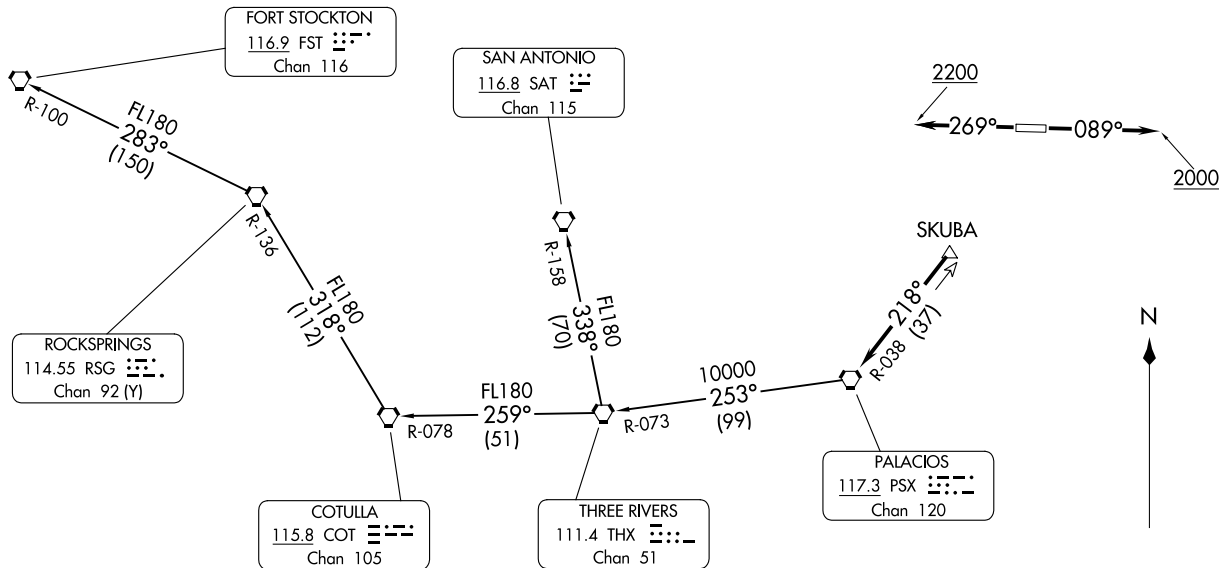
AL-6575 (FAA)

HOUSTON/SOUTHWEST (AXH)
HOUSTON, TEXAS

AWOS-3
123.625
CLNC DEL
120.8
CTAF
123.0
HOUSTON DEP CON
123.8 257.7

PALACIOS THREE DEPARTURE
(PSX3.PSX) 03NOV22

HOUSTON, TEXAS
HOUSTON/SOUTHWEST (AXH)



NOTE: Chart not to scale.

(CONTINUED ON FOLLOWING PAGE)

PALACIOS THREE DEPARTURE



DEPARTURE ROUTE DESCRIPTION

TAKEOFF RUNWAY 9: Climb on heading 089° to 2000 before turning. When entering controlled airspace, climb on assigned heading for RADAR vectors to SKUBA. Maintain ATC assigned altitude. Expect filed altitude 10 minutes after departure, thence

TAKEOFF RUNWAY 27: Climb on heading 269° to 2200 before turning. When entering controlled airspace, climb on assigned heading for RADAR vectors to SKUBA. Maintain ATC assigned altitude. Expect filed altitude 10 minutes after departure, thence

. . . . on PSX R-038 to PSX VORTAC.

FORT STOCKTON TRANSITION (PSX3.FST): From over PSX VORTAC on PSX R-253 and THX R-073 to THX VORTAC, then on THX R-259 and COT R-078 to COT VORTAC, then on COT R-318 and RSG R-136 to RSG VORTAC, then on RSG R-283 and FST R-100 to FST VORTAC.

SAN ANTONIO TRANSITION (PSX3.SAT): From over PSX VORTAC on PSX R-253 and THX R-073 to THX VORTAC, then on SAT R-158 to SAT VORTAC.

SC-5, 28 NOV 2024 to 26 DEC 2024

SC-5, 28 NOV 2024 to 26 DEC 2024