

(WATFO6.WATFO) 23222

AL-6575 (FAA)

HOUSTON/SOUTHWEST (AXH)
HOUSTON, TEXAS

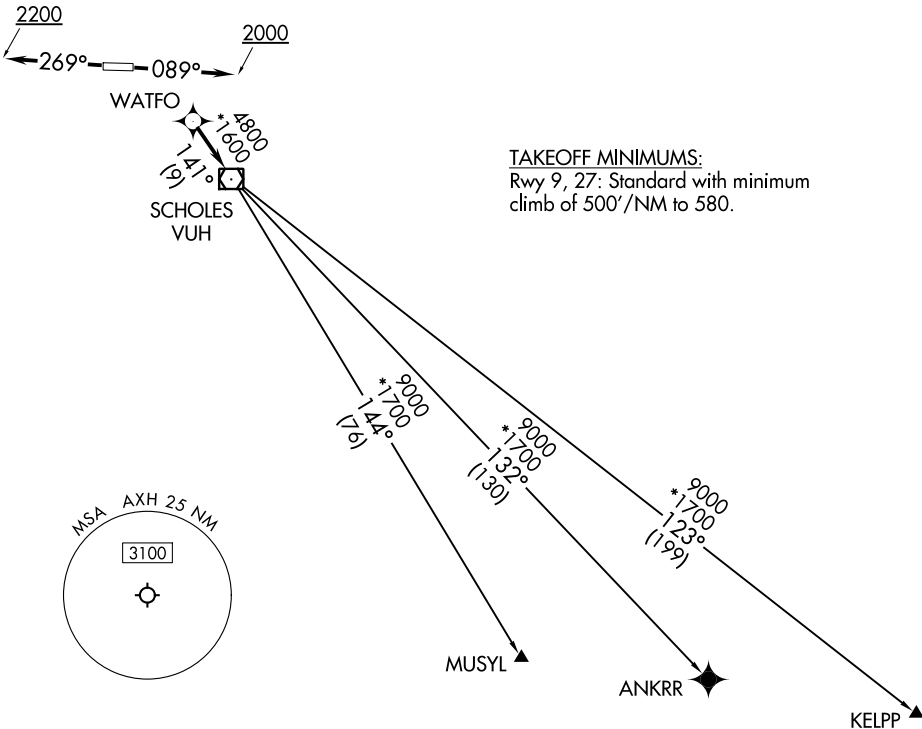
WATFO SIX DEPARTURE (RNAV)

AWOS-3
123.625
CTAF
123.0
CLNC DEL
120.8
HOUSTON DEP CON
123.8 257.7

RNAV 1 - DME/DME/IRU or GPS.

RADAR required.

**TOP ALTITUDE:
ASSIGNED BY ATC**



TAKEOFF MINIMUMS:
Rwy 9, 27: Standard with minimum
climb of 500'/NM to 580.

SC-5, 28 NOV 2024 to 26 DEC 2024

SC-5, 28 NOV 2024 to 26 DEC 2024

NOTE: Chart not to scale.



DEPARTURE ROUTE DESCRIPTION

TAKEOFF RUNWAY 9: Climb on heading 089° to 2000, for RADAR vectors to WATFO, thence. . . .

TAKEOFF RUNWAY 27: Climb on heading 269° to 2200, for RADAR vectors to WATFO, thence. . . .

. . . .on track 141° to VUH VOR/DME, then on (transition). Maintain ATC assigned altitude. Expect filed altitude 10 minutes after departure.

ANKRR TRANSITION (WATFO6.ANKRR)

KELPP TRANSITION (WATFO6.KELPP)

MUSYL TRANSITION (WATFO6.MUSYL)

WATFO SIX DEPARTURE (RNAV)

(WATFO6.WATFO) 10AUG23

HOUSTON, TEXAS
HOUSTON/SOUTHWEST (AXH)