

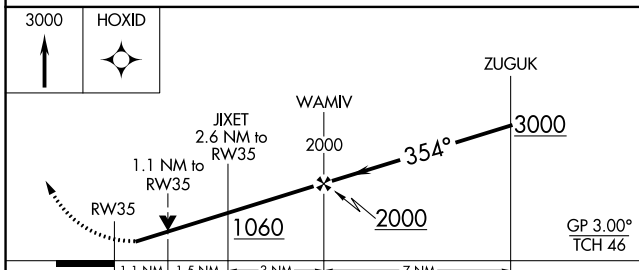
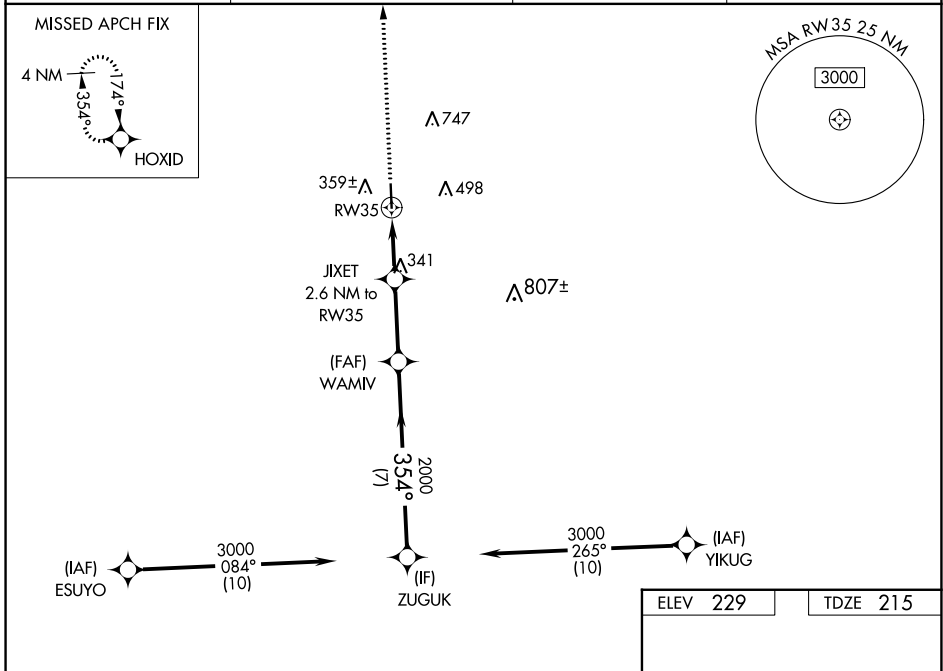
WAAS CH <b>42831</b> <b>W35A</b>	APP CRS <b>354°</b>	Rwy Idg <b>5003</b> TDZE <b>215</b> Apt Elev <b>229</b>
--	------------------------	---

# RNAV (GPS) RWY 35

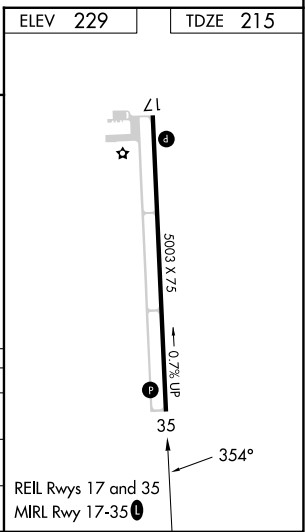
NAVASOTA MUNI (60R)

RNP APCH-GPS.	MISSED APPROACH: Climb to 3000 direct HOXID and hold.
<p><b>⚠</b> Rwy 35 helicopter visibility reduction below 3/4 NA. Baro-VNAV and VDP NA when using 11R altimeter setting. For uncompensated Baro-VNAV systems, LNAV/VNAV NA below -15°C or above 54°C. When local altimeter setting not received, use 11R altimeter setting and increase LPV DA to 515 feet and all visibilities 1/8 SM; increase LNAV/VNAV DA to 515 feet and all visibilities 1/8 SM; increase all MDAs 60 feet and LNAV visibility Cat C and D 1/4 SM.</p>	

AWOS-3PT <b>120.925</b>	HOUSTON APP CON <b>134.3 360.85</b>	CTAF <b>122.9</b>	<b>123.3</b>
----------------------------	--	----------------------	--------------



CATEGORY	A	B	C	D
LPV DA	465-1 250 (300-1)			
LNAV/VNAV DA	465-1 250 (300-1)			
LNAV MDA	600-1 385 (400-1)	600-1 1/8 385 (400-1 1/8)		



SC-5, 28 NOV 2024 to 26 DEC 2024

SC-5, 28 NOV 2024 to 26 DEC 2024