

WAAS CH 97532 W16A	APP CRS 164°	Rwy Idg TDZE Apt Elev	4500 1299 1304
--	------------------------	-----------------------------	---

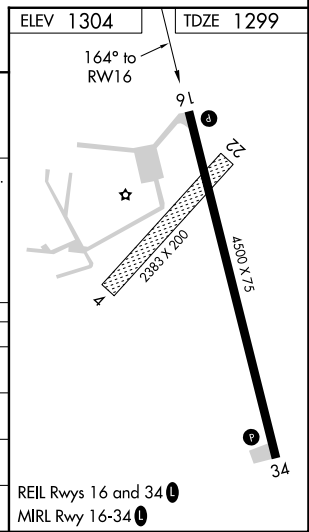
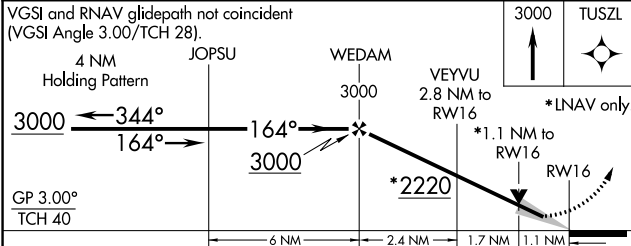
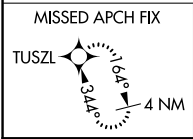
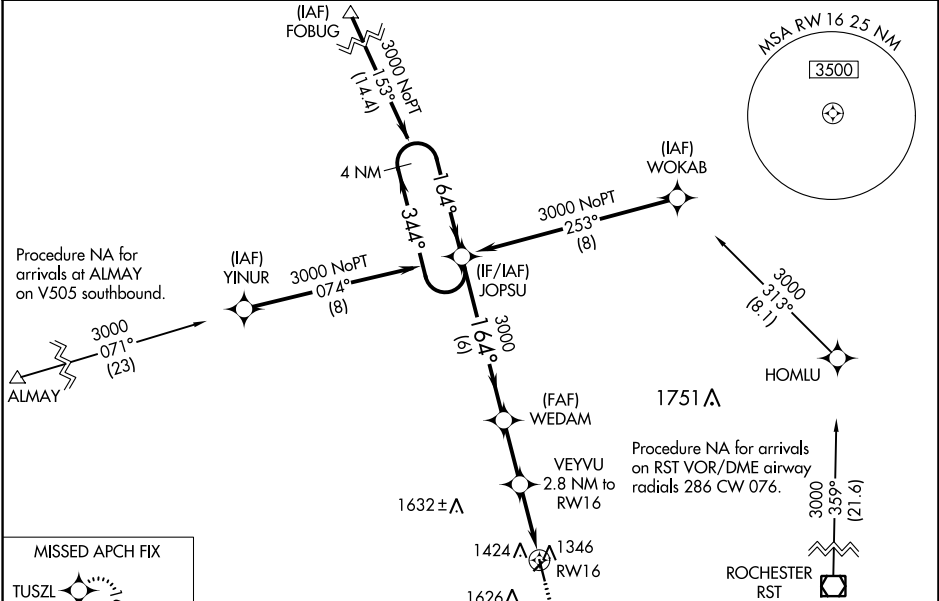
RNAV (GPS) RWY 16

DODGE CENTER (TOB)

⚠ For uncompensated Baro-VNAV systems, LNAV/VNAV NA below -17°C (2°F) or above 54°C (130°F). DME/DME RNP-0.3 NA. Baro-VNAV and VDP NA with Rochester Intl altimeter setting. When local altimeter setting not received, use Rochester Intl altimeter setting and increase all DA 39 feet and all MDA 40 feet, and increase LNAV/VNAV all Cats, LNAV Cat C visibility 1/8 mile, and Circling Cat C visibility 1/4 mile.

MISSED APPROACH: Climb to 3000 direct TUSZL and hold.

AWOS-3 119.075	ROCHESTER APP CON* 119.8 251.125	CTAF 122.9
--------------------------	--	----------------------



CATEGORY	A	B	C	D
LPV DA		1549-1	250 (300-1)	NA
LNAV/VNAV DA		1586-1	287 (300-1)	NA
LNAV MDA	1680-1	381 (400-1)	1680-1 1/8 381 (400-1 1/8)	NA
C CIRCLING	1960-1	656 (700-1)	1960-1 3/4 656 (700-1 3/4)	NA

NC-1, 28 NOV 2024 to 26 DEC 2024

NC-1, 28 NOV 2024 to 26 DEC 2024

REIL Rwy 16 and 34
MIRL Rwy 16-34