

|                          |                 |                             |                      |
|--------------------------|-----------------|-----------------------------|----------------------|
| WAAS<br>CH 45633<br>W34A | APP CRS<br>344° | Rwy Idg<br>TDZE<br>Apt Elev | 4500<br>1304<br>1304 |
|--------------------------|-----------------|-----------------------------|----------------------|

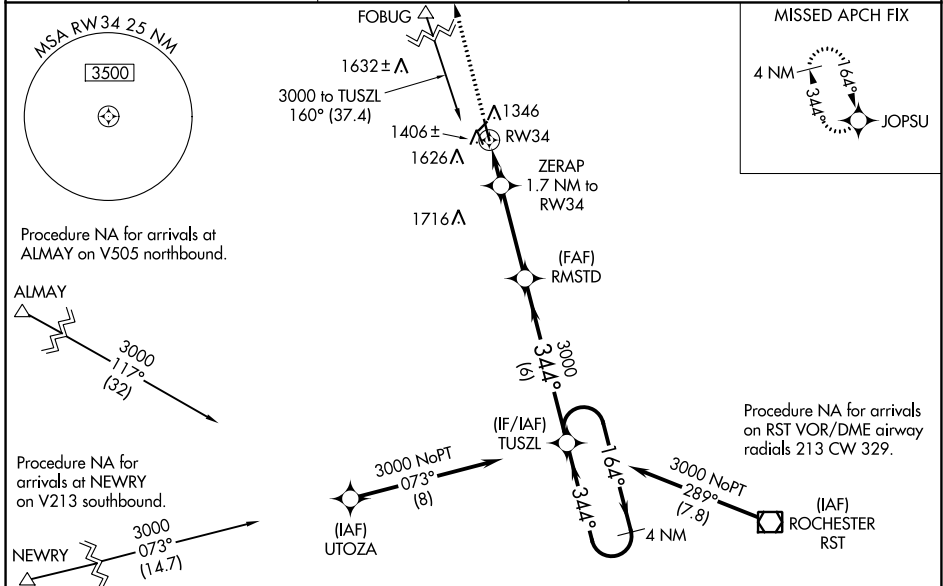
# RNAV (GPS) RWY 34

DODGE CENTER (TOB)

**⚠** Baro-VNAV NA when using Rochester Intl altimeter setting. For uncompensated Baro-VNAV systems, LNAV/VNAV NA below -17°C (2°F) or above 54°C (130°F). DME/DME RNP-0.3 NA. When local altimeter setting not received, use Rochester Intl altimeter setting and increase all DA 39 feet and all MDA 40 feet, and increase LNAV Cat C visibility 1/8 mile and Circling Cat C visibility 1/4 mile. Rwy 34 Straight-in and Circling minimums NA at night.

**⚠** MISSED APPROACH: Climb to 3000 direct JOPSU and hold.

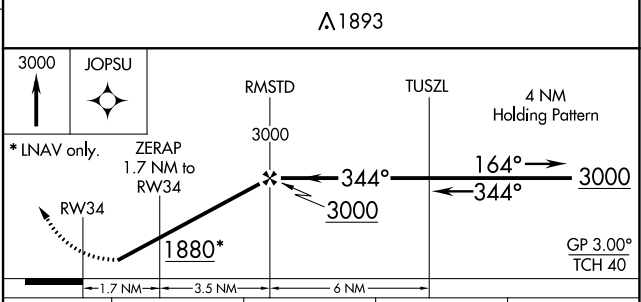
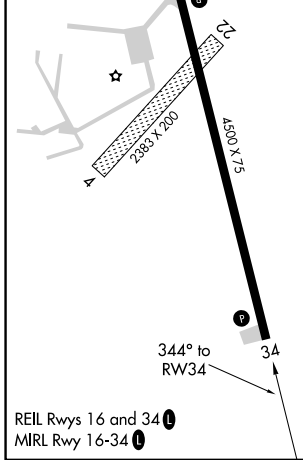
|                          |   |                      |
|--------------------------|---|----------------------|
| AWOS-3<br><b>119.075</b> | ROCHESTER APP CON *<br><b>119.8 251.125</b> | CTAF<br><b>122.9</b> |
|--------------------------|---|----------------------|



NC-1, 28 NOV 2024 to 26 DEC 2024

NC-1, 28 NOV 2024 to 26 DEC 2024

|           |           |
|-----------|-----------|
| ELEV 1304 | TDZE 1304 |
|-----------|-----------|



| CATEGORY                                     | A      | B           | C                             | D  |
|--|--------|-------------|-------------------------------|----|
| LPV DA                                       | 1554-1 | 250 (300-1) |                               | NA |
| LNAV/VNAV DA                                 | 1556-1 | 252 (300-1) |                               | NA |
| LNAV MDA                                     | 1660-1 | 356 (400-1) |                               | NA |
| <input checked="" type="checkbox"/> CIRCLING | 1960-1 | 656 (700-1) | 1960-1 3/4<br>656 (700-1 3/4) | NA |