

WAAS CH <b>73042</b> <b>W36A</b>	APP CRS <b>358°</b>	Rwy Idg TDZE Apt Elev	<b>4001</b> <b>1226</b> <b>1226</b>
--	------------------------	-----------------------------	---

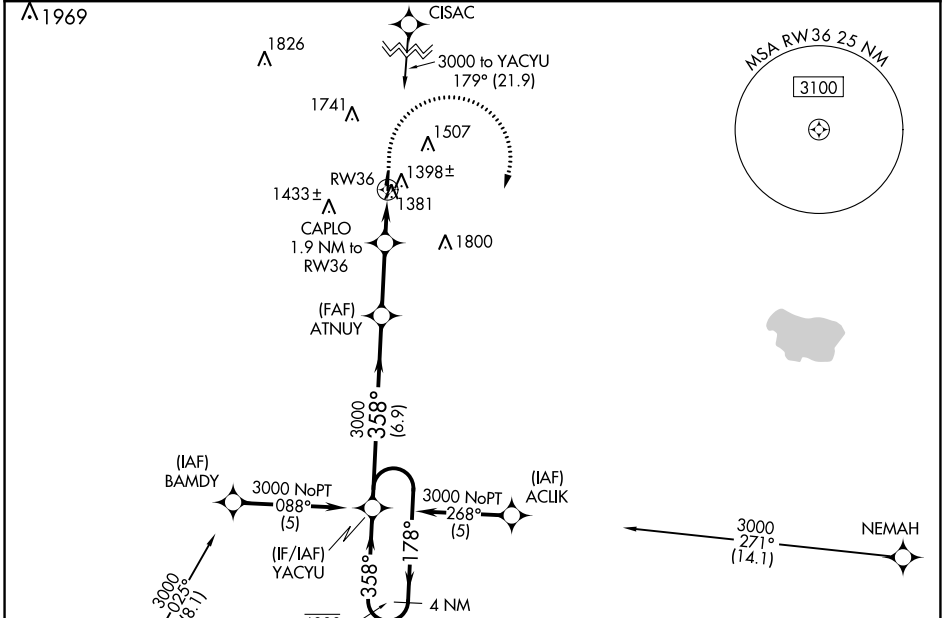
# RNAV (GPS) RWY 36

CHEROKEE COUNTY RGNL (CKP)

RNP APCH.

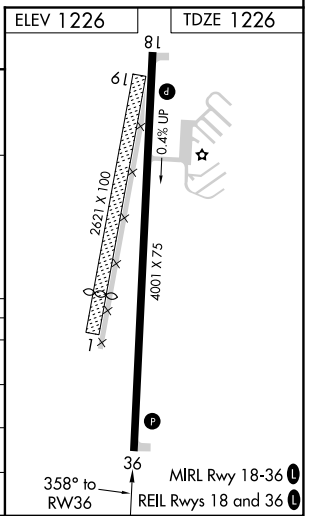
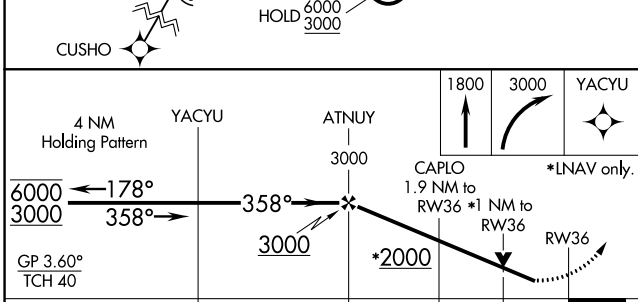
MISSED APPROACH: Climb to 1800 then climbing right turn to 3000 direct YACYU and hold.

AWOS-3 <b>119.225</b>	MINNEAPOLIS CENTER <b>125.025 235.625</b>	UNICOM <b>122.8 (CTAF) 0</b>
--------------------------	--	---------------------------------



NC-3, 28 NOV 2024 to 26 DEC 2024

NC-3, 28 NOV 2024 to 26 DEC 2024



CATEGORY	A	B	C	D
LPV DA	1492-1	266 (300-1)		NA
LNNAV/VNAV DA	1540-1	314 (400-1)		NA
LNNAV MDA	1660-1	434 (500-1)		NA
<b>C</b> CIRCLING	1760-1 534 (600-1)	1820-1 594 (600-1)		NA