

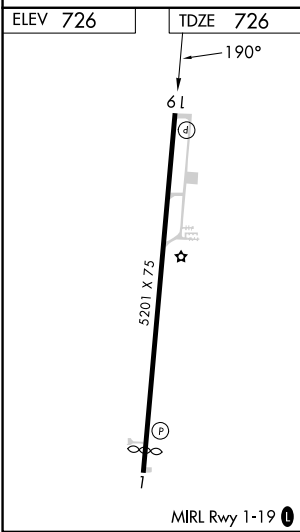
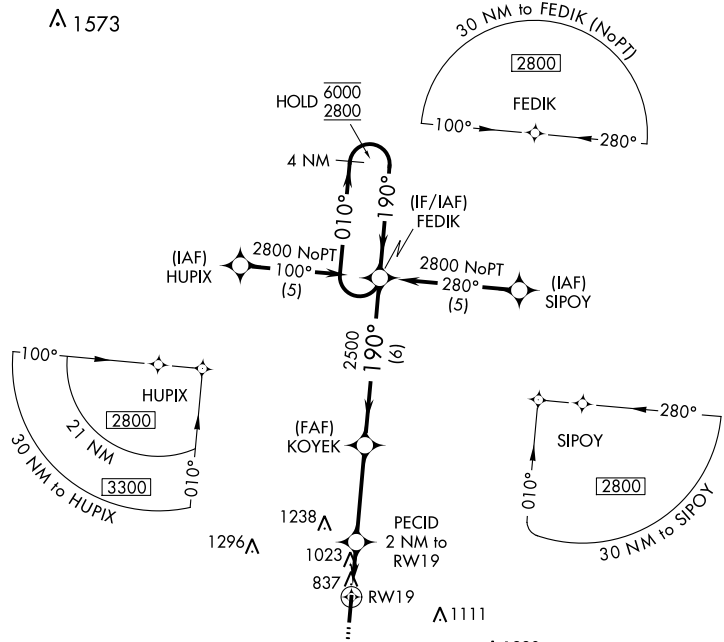
APP CRS 190°	Rwy Idg TDZE Apt Elev	5201 726 726
------------------------	-----------------------------	---

RNAV (GPS) RWY 19

JAMES A RHODES (JRO)

RNP APCH - GPS.		MISSED APPROACH: Climb to 2800 direct OSATE and hold.
<p>Procedure NA at night. Rwy 19 helicopter visibility reduction below 1 SM NA.</p>		

AWOS-3PT 118.825	HUNTINGTON APP CON 128.4 270.1	UNICOM 122.7 (CTAF) 0
----------------------------	--	---------------------------------



ELEV 726	TDZE 726	MISSED APCH FIX OSATE	
2800	OSATE	VGSI and descent angles not coincident (VGSI Angle 4.00/TCH 45).	
RWY 19		KOYEK	FEDIK 4 NM Holding Pattern
PECID 2 NM to RWY 19		2500	6000 2800
3.32° TCH 40		1460	010° 190°
2 NM		3.5 NM	6 NM
CATEGORY	A	B	C D
LNAV MDA	1280-1	554 (600-1)	1280-1½ 554 (600-1½)
CIRCLING	1340-1 614 (700-1)	1480-1 754 (800-1)	1680-3 954 (1000-3)

EC-2, 28 NOV 2024 to 26 DEC 2024

EC-2, 28 NOV 2024 to 26 DEC 2024