

WAAS CH 99421 W08A	APP CRS 081°	Rwy ldg TDZE Apt Elev 3000 534 534
--	------------------------	--

RNAV (GPS) RWY 8

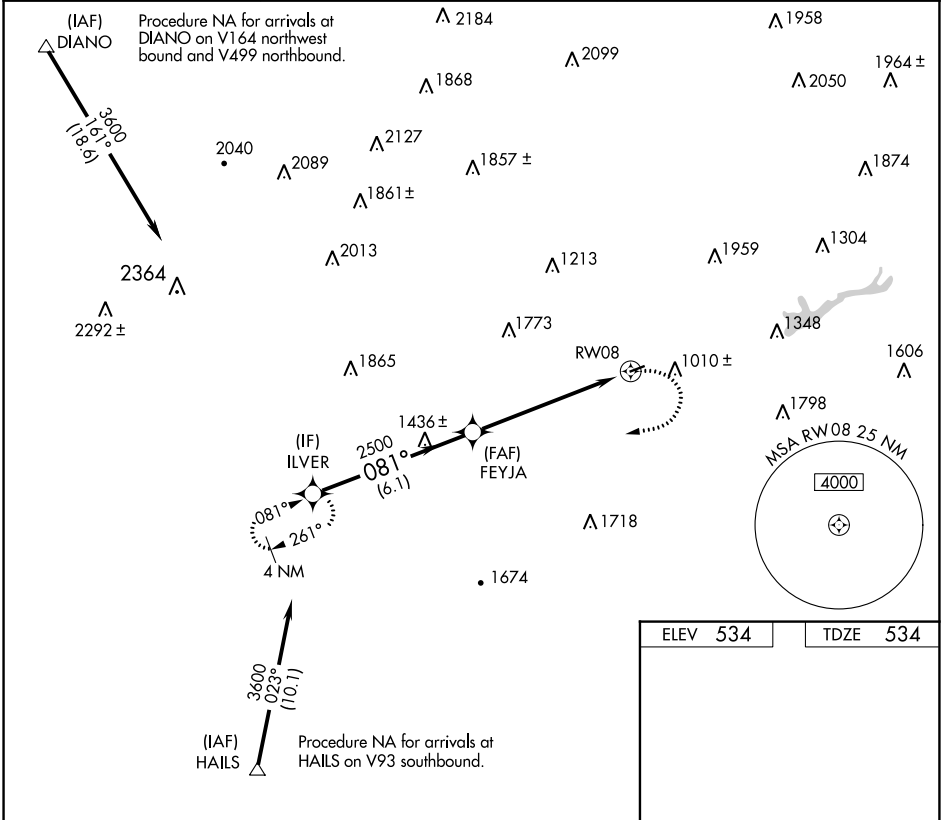
JAKE ARNER MEML (22N)

RNP APCH.

When local altimeter setting not received, use Lehigh Valley Intl altimeter setting and increase all MDA 60 feet. Rwy 8 helicopter visibility reduction below 3/4 SM NA.

MISSED APPROACH: Climbing right turn to 3600 direct ILVER and hold.

AWOS-3PT 119.350	ALLENTOWN APP CON 119.65 124.45 351.8	UNICOM 123.05 (CTAF) 0
----------------------------	---	----------------------------------



NE-4, 28 NOV 2024 to 26 DEC 2024

NE-4, 28 NOV 2024 to 26 DEC 2024