

WAAS CH <b>99540</b> <b>W36A</b>	APP CRS <b>360°</b>	Rwy Idg TDZE Apt Elev	<b>3200</b> <b>968</b> <b>968</b>
--	------------------------	-----------------------------	---

# RNAV (GPS) RWY 36

BUFFALO MUNI (CFE)

**▼** For uncompensated Baro-VNAV systems, LNAV/VNAV NA below -16°C (4°F) or above 54°C (130°F). Circling Rwy 18 NA at night. Rwy 36 helicopter visibility reduction below ¾ SM NA. DME/DME RNP-0.3 NA.

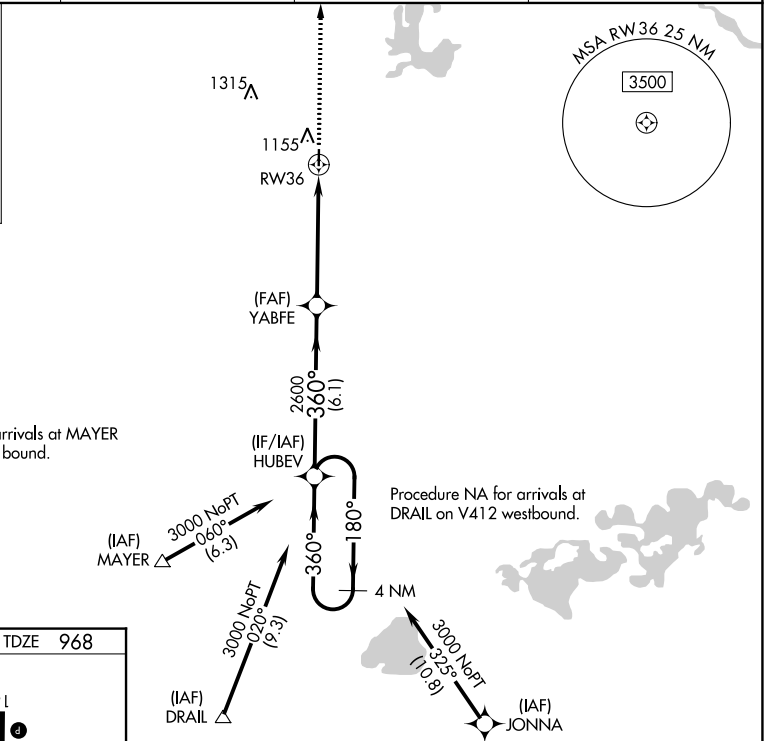
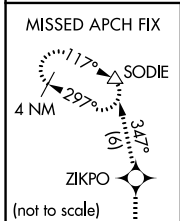
MISSED APPROACH: Climb to 3400 direct ZIKPO and track 347° to SODIE and hold.

AWOS-3PT  
**120.45**

MINNEAPOLIS APP CON  
**126.5 335.65**

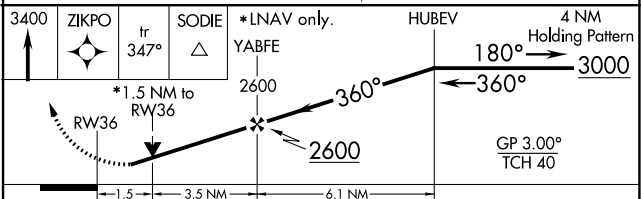
GCO  
**121.725**

UNICOM  
**122.8** (CTAF) **①**



ELEV 968	TDZE 968
REIL Rws 18 and 36	①
MIRL Rwy 18-36	①

81  
3200 X 75  
36  
0.4% UP  
360°



CATEGORY	A	B	C	D
LPV DA	1280-1½	312 (400-1½)		NA
LNAV/VNAV DA	1396-1½	428 (500-1½)		NA
LNAV MDA	1460-1	492 (500-1)	1460-1¾ 492 (500-1¾)	NA
<b>C</b> CIRCLING	1460-1	492 (500-1)	1540-1½ 572 (600-1½)	NA

NC-1, 28 NOV 2024 to 26 DEC 2024

NC-1, 28 NOV 2024 to 26 DEC 2024