

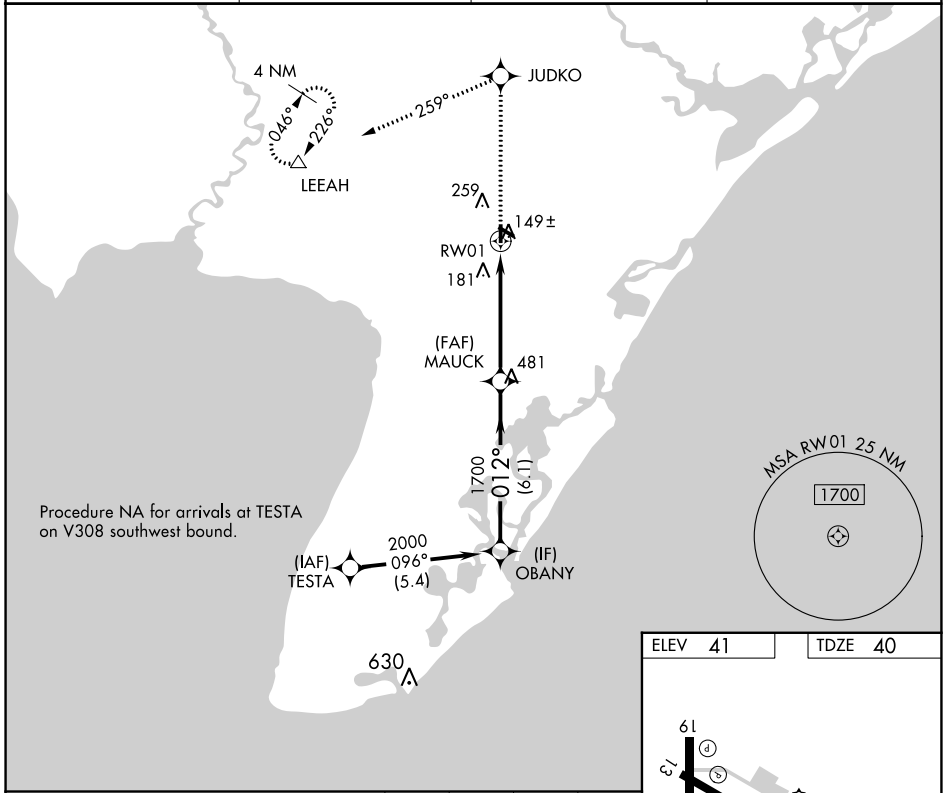
APP CRS	Rwy Idg	<b>3304</b>
<b>012°</b>	TDZE	<b>40</b>
	Apt Elev	<b>41</b>

# RNAV (GPS) RWY 1

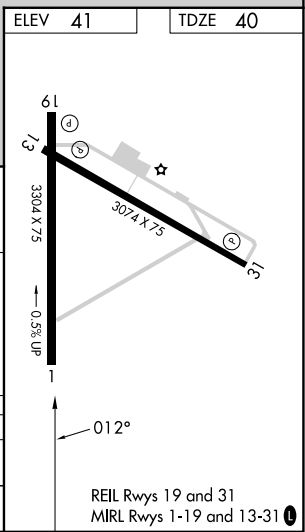
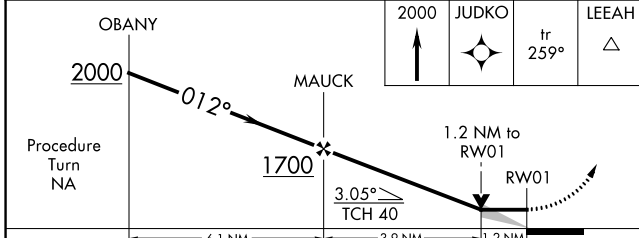
WOODBINE MUNI (OBI)

RNP APCH.		MISSED APPROACH: Climb to 2000 direct JUDKO and on track 259° to LEEAH and hold.
▼ ▲ NA	When local altimeter setting not received, use Millville Muni altimeter setting and increase all MDA 60 feet, and increase LNAV and Circling Cat C visibility ¼ mile. VDP NA when using Millville Muni altimeter setting. Circling Rwy 13, 19, 31 NA at night. Rwy 1 helicopter visibility reduction below ¾ SM NA.	

AWOS-3 <b>120.475</b>	ATLANTIC CITY APP CON <b>124.6 327.125</b>	GCO <b>121.725</b>	UNICOM <b>123.05 (CTAF) 0</b>
--------------------------	---	-----------------------	----------------------------------



Procedure NA for arrivals at TESTA on V308 southwest bound.



CATEGORY	A	B	C	D
LNAV MDA	440-1	400 (400-1)	440-1½ 400 (400-1½)	NA
CIRCLING	620-1	579 (600-1)	620-1½ 579 (600-1½)	NA

NE-2, 28 NOV 2024 to 26 DEC 2024

NE-2, 28 NOV 2024 to 26 DEC 2024