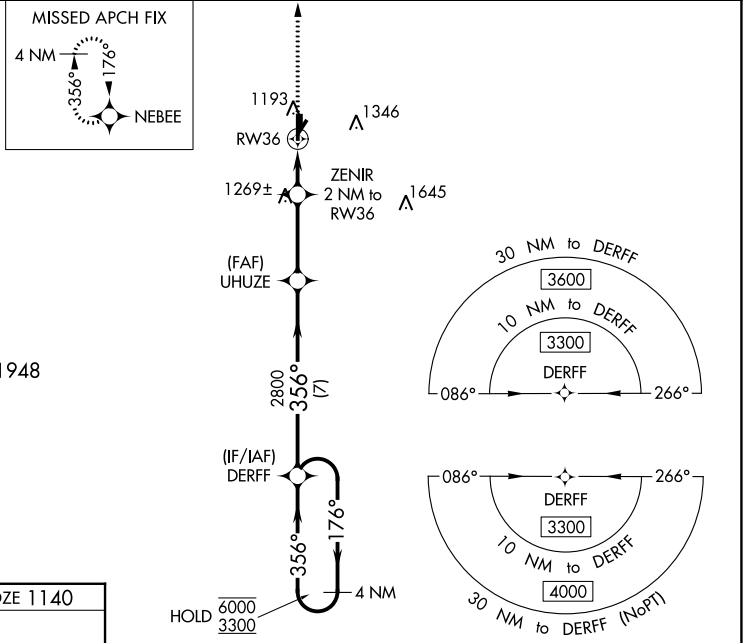


WAAS CH 48930 W36A	APP CRS 356°	Rwy Idg TDZE 1140 Apt Elev 1152	5101
--	------------------------	---	-------------

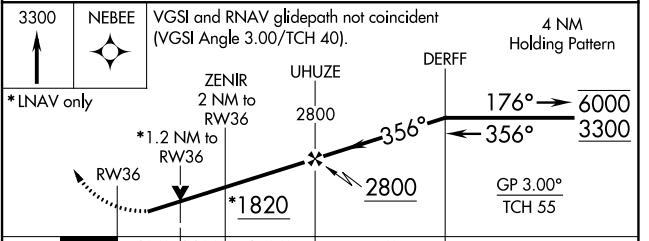
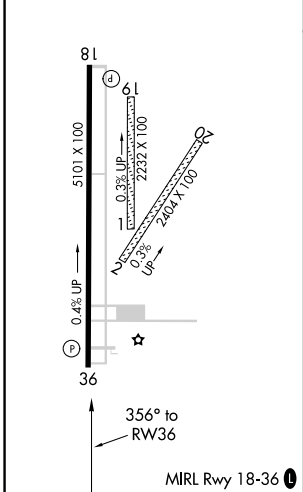
RNAV (GPS) RWY 36

CHICKASHA MUNI (CHK)

RNP APCH. ▼ Circling NA to Rwy 1, 2, 19 and 20. Rwy 36 helicopter visibility reduction below ¾ SM NA. For uncompensated Baro-VNAV systems, LNAV/VNAV NA below -17°C or above 54°C.		MISSED APPROACH: Climb to 3300 direct NEBEE and hold.
AWOS-3 118,175	OKE CITY APP CON 124.6 266.8	UNICOM 123.0 (CTAF) 0



ELEV 1152	TDZE 1140
-----------	-----------



CATEGORY	A	B	C	D
LPV DA	1390-¾	250 (300-¾)		NA
LNAV/VNAV DA	1450-1	310 (300-1)		NA
LNAV MDA	1580-1	440 (500-1)	1580-1¼ 440 (500-1¼)	NA
CIRCLING	1600-1 448 (500-1)	1620-1 468 (500-1)	1700-1½ 548 (600-1½)	NA

SC-1, 28 NOV 2024 to 26 DEC 2024

SC-1, 28 NOV 2024 to 26 DEC 2024