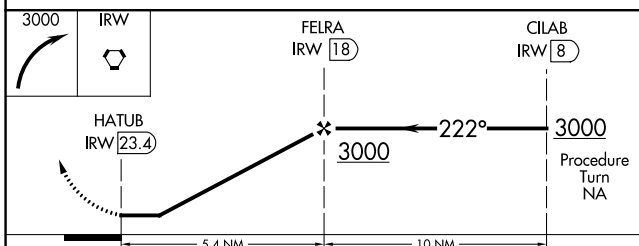
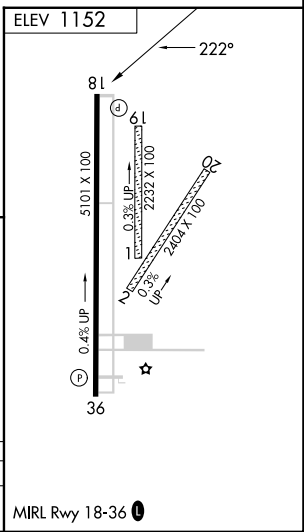
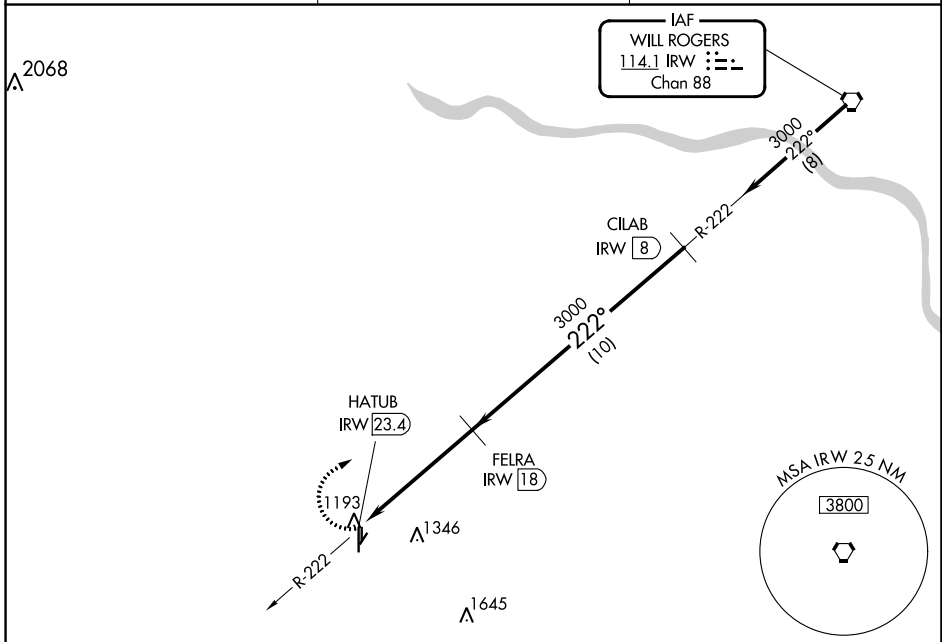


VORTAC IRW <b>114.1</b> Chan <b>88</b>	APP CRS <b>222°</b>	Rwy Idg TDZE Apt Elev	<b>N/A</b> <b>N/A</b> <b>1152</b>
--	------------------------	-----------------------------	---

**VOR/DME-A**  
CHICKASHA MUNI (CHK)

**▽** If local altimeter not received; use OKC Will Rogers Intl altimeter setting and increase all MDAs 80 feet. Circling NA to Rwy's 1, 2, 19 and 20.  
**△ NA** MISSED APPROACH: Climbing right turn to 3000 direct IRW VORTAC.

AWOS-3 <b>118.175</b>	OKE CITY APP CON <b>124.6 266.8</b>	UNICOM <b>123.0 (CTAF) 0</b>
--------------------------	--	---------------------------------



CATEGORY	A	B	C	D
<b>CIRCLING</b>	1660-1 508 (600-1)	1660-1¼ 508 (600-1¼)	1700-1½ 548 (600-1½)	NA

SC-1, 28 NOV 2024 to 26 DEC 2024

SC-1, 28 NOV 2024 to 26 DEC 2024