

FORT CARSON, COLORADO

RNAV (GPS) RWY 31

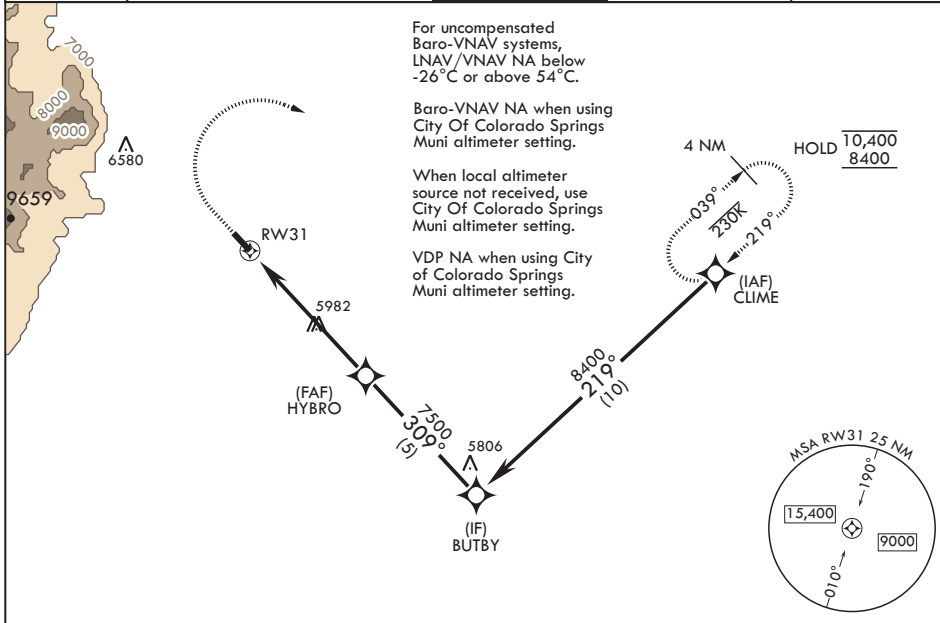
WAAS CH 43949 W31A	APCH CRS 309°	Rwy ldg TDZE Arprt Elev	4500 5826 5840
---------------------------------	-------------------------	-------------------------------	---

-(USA)

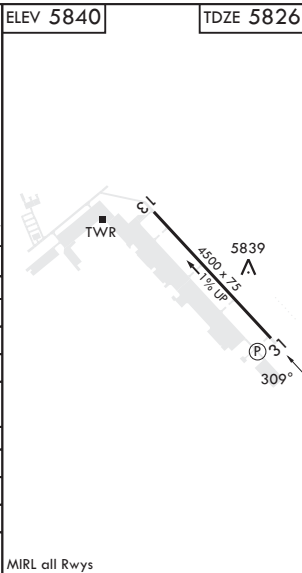
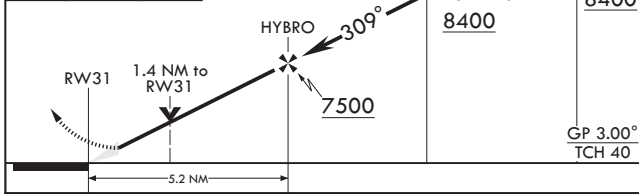
BUTTS AHP (FORT CARSON) (KFCS)

RNP APCH - GPS	MISSED APPROACH: Climb to 6400 then climbing right turn to 8400 direct CLIME and hold.
----------------	--

ATIS 108.8	SPRINGS APP CON/DEP CON 124.0 257.875	TOWER 125.5 229.4	GND CON 118.55 253.6	CLNC DEL 239.3
----------------------	---	-----------------------------	--------------------------------	--------------------------



6400	8400	CLIME	ELEV 5840	TDZE 5826
------	------	-------	-----------	-----------



CATEGORY	A	B	C	D
LPV DA	6026-3/4	200	(200-3/4)	
LNAV/VNAV DA	6130-7/8	304	(300-7/8)	
LNAV MDA	6280-1	454 (500-1)	6280-1 3/8	454 (500-1 1/8)
C CIRCLING*	6280-1 406 (500-1)	6400-1 526 (600-1)	6580-2 706 (800-2)	6880-3 1006 (1100-3)
CITY OF COLORADO SPRINGS MUNI ALTIMETER SETTING MINIMUMS				
LPV DA	6089-7/8	263	(300-7/8)	
LNAV/VNAV DA	6193-1	367	(400-1)	
LNAV MDA	6360-1	534 (500-1)	6360-1 1/2	534 (500-1 1/2)
C CIRCLING*	6360-1 486 (500-1)	6480-1 606 (700-1)	6660-2 1/4 786 (800-2 1/4)	6960-3 1086 (1100-3)

MIRL all Rwys

FORT CARSON, COLORADO
Orig 23FEB23

38°41'N - 104°46'W

BUTTS AHP (FORT CARSON) (KFCS)

RNAV (GPS) RWY 31

SW-1, 28 NOV 2024 to 26 DEC 2024

SW-1, 28 NOV 2024 to 26 DEC 2024