

ROTA ISLAND, CQ

AL-6596 (FAA)

24025

|            |             |          |      |
|------------|-------------|----------|------|
| NDB GRO    | APP CRS     | Rwy Idg  | 7000 |
| <b>332</b> | <b>260°</b> | TDZE     | 607  |
|            |             | Apt Elev | 607  |

# NDB RWY 27

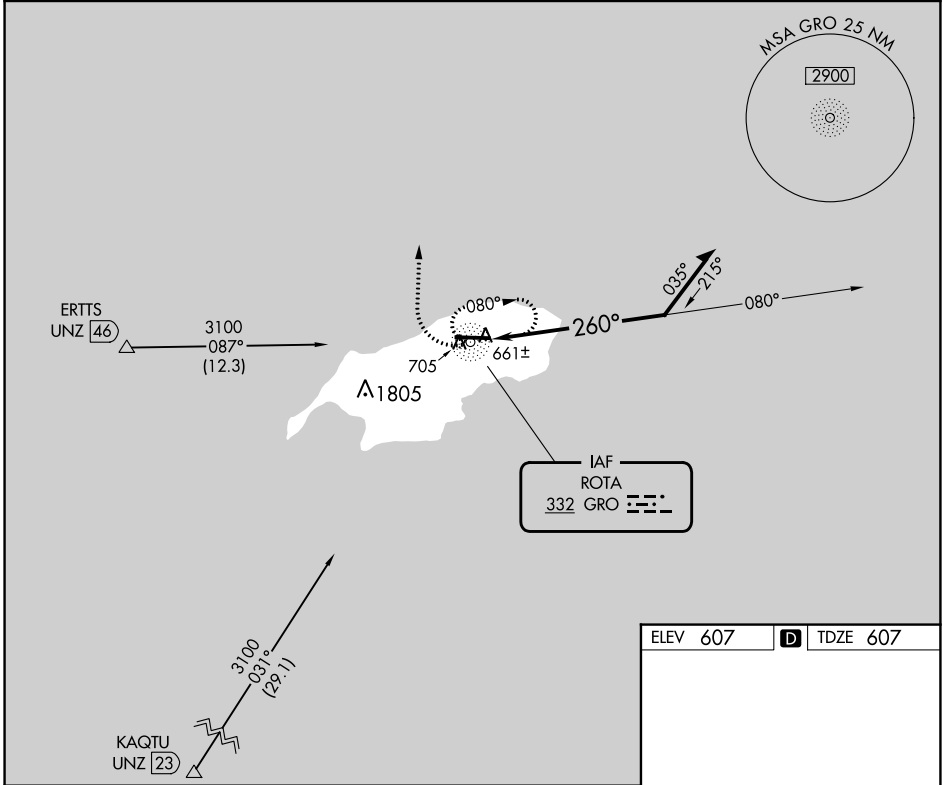
BENJAMIN TAISACAN MANGLONA INTL (GRO)(PGRO)

**⚠** When local altimeter setting not received, use Andersen AFB altimeter setting and increase all MDA 320 feet, increase S-27 Cat B visibility ¼ mile, Cat C, D visibility 1½ mile, Circling Cat A, B visibility ¼ mile, Cat C 1 mile, Cat D ¾ mile. Circling NA south of Rwy 9-27.

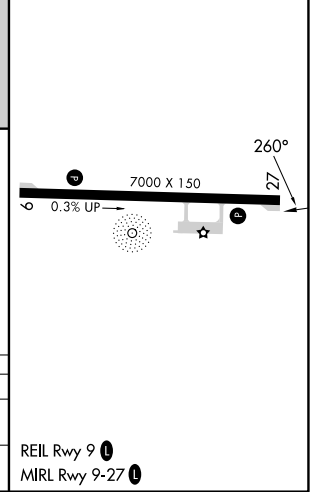
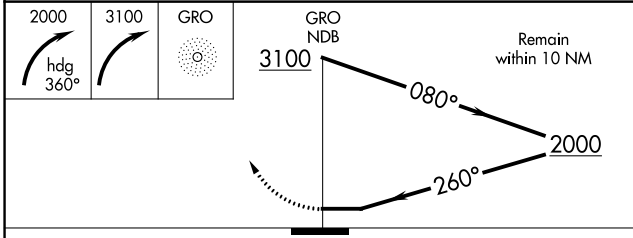
**MISSED APPROACH:** Climbing right turn to 2000 on heading 360° then continue climbing right turn to 3100 direct GRO NDB and hold.

GUAM CERAP  
**120.5 263.0**

CTAF  
**123.6 0**



|          |          |          |
|----------|----------|----------|
| ELEV 607 | <b>D</b> | TDZE 607 |
|----------|----------|----------|



| CATEGORY          | A      | B           | C       | D                     |
|-------------------|--------|-------------|---------|-----------------------|
| S-27              | 1120-1 | 513 (600-1) | 1120-1¾ | 513 (600-1¾)          |
| <b>C</b> CIRCLING | 1120-1 | 513 (600-1) | 1120-1½ | 1160-2<br>553 (600-2) |

ROTA ISLAND, CQ  
Amdt 4A 02MAR17

BENJAMIN TAISACAN MANGLONA INTL (GRO)(PGRO)  
14°10'N-145°14'E

# NDB RWY 27

PAC, 31 OCT 2024 to 26 DEC 2024

PAC, 31 OCT 2024 to 26 DEC 2024