

APP CRS	Rwy Idg	7000
093°	TDZE	594
	Apt Elev	607

RNAV (GPS) RWY 9

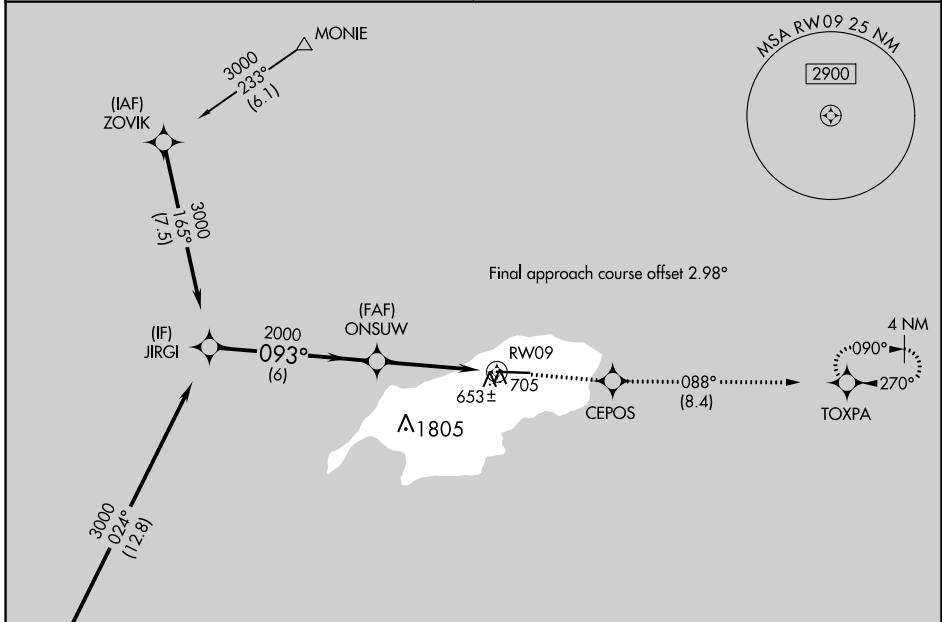
BENJAMIN TAISACAN MANGLONA INTL (GRO)(PGRO)

▼ Circling NA south of Rwy 9-27. DME/DME RNP-0.3 NA. When local altimeter setting not received, use Andersen AFB altimeter setting and increase all MDA 320 feet, increase LNAV Cat C, D visibility 7/8 mile, Circling Cat C, D visibility 3/4 mile. VDP NA when using Andersen AFB altimeter setting.

MISSED APPROACH: Climb to 3000 direct CEPOS and on track 088° to TOXPA and hold.

GUAM CERAP
120.5 263.0

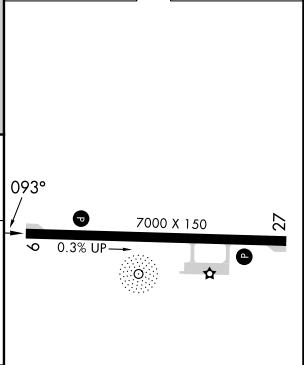
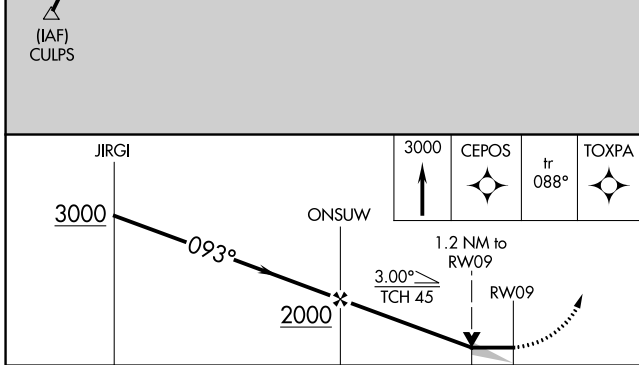
CTAF
123.6



PAC, 31 OCT 2024 to 26 DEC 2024

PAC, 31 OCT 2024 to 26 DEC 2024

ELEV 607	D TDZE 594
----------	-------------------



	6 NM		3.1 NM		1.2
CATEGORY	A	B	C	D	
LNAV MDA	1000-1	406 (400-1)	1000-1 1/8	406 (400-1 1/8)	
C CIRCLING	1000-1 393 (400-1)	1060-1 453 (500-1)	1060-1 1/2 453 (500-1 1/2)	1160-2 553 (600-2)	

REIL Rwy 9 **1**
MIRL Rwy 9-27 **1**

RNAV (GPS) RWY 9