

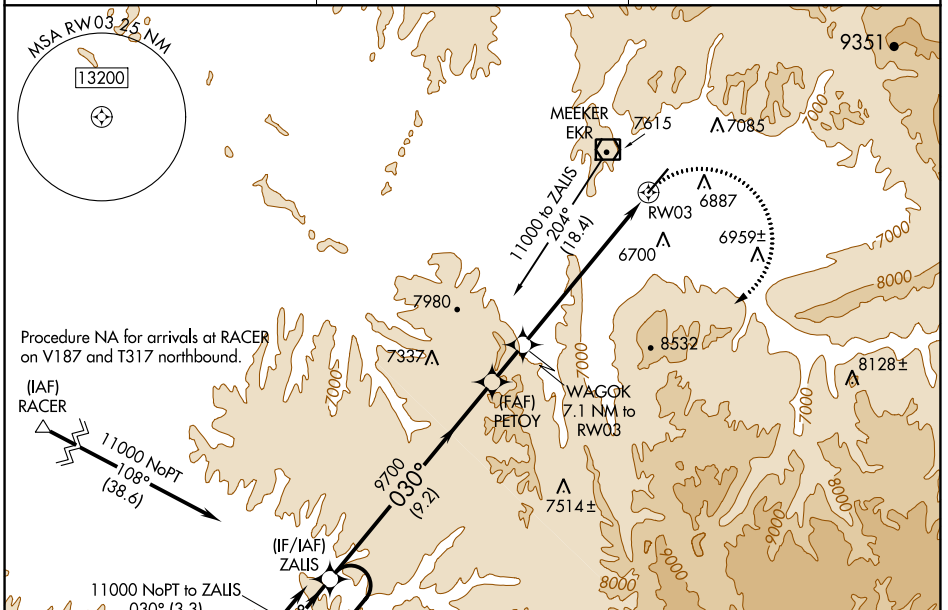
APP CRS	Rwy Idg	<b>6503</b>
<b>030°</b>	TDZE	<b>6381</b>
	Apt Elev	<b>6415</b>

# RNAV (GPS) RWY 3

MEEKER COULTER FLD (E/O)

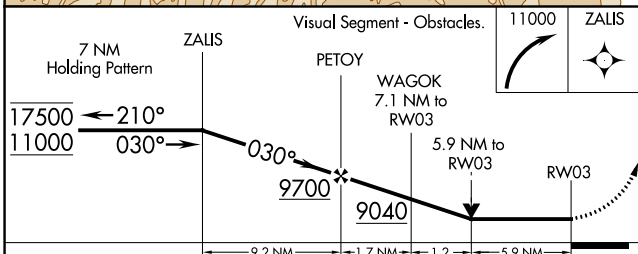
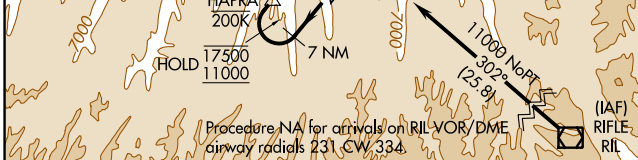
RNP APCH - GPS.	MISSED APPROACH: Climbing right turn to 11000 direct ZALIS and hold.
<p>▼ Rwy 3 helicopter visibility reduction below 3/4 SM NA.</p> <p>❄ -25°C</p>	

ASOS <b>135.525</b>	DENVER CENTER <b>134.5 327.8</b>	UNICOM <b>122.8 (CTAF)</b>
------------------------	-------------------------------------	-------------------------------

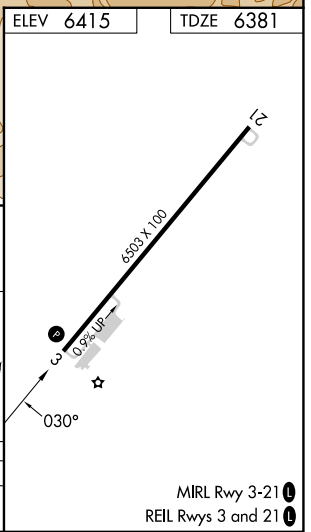


Procedure NA for arrivals at RACER on V187 and T317 northbound.

ELEV 6415	TDZE 6381
-----------	-----------



CATEGORY	A	B	C	D
LNAV MDA	8300-1¼ 1919 (1900-1¼)	8300-1½ 1919 (1900-1½)	8300-3 1919 (1900-3)	NA



SW-1, 28 NOV 2024 to 26 DEC 2024

SW-1, 28 NOV 2024 to 26 DEC 2024

MIRL Rwy 3-21  
REIL Rwy 3 and 21