

WAAS CH <b>50431</b> <b>W07A</b>	APP CRS <b>067°</b>	Rwy Idg TDZE Apt Elev	<b>4500</b> <b>692</b> <b>692</b>
--	------------------------	-----------------------------	---

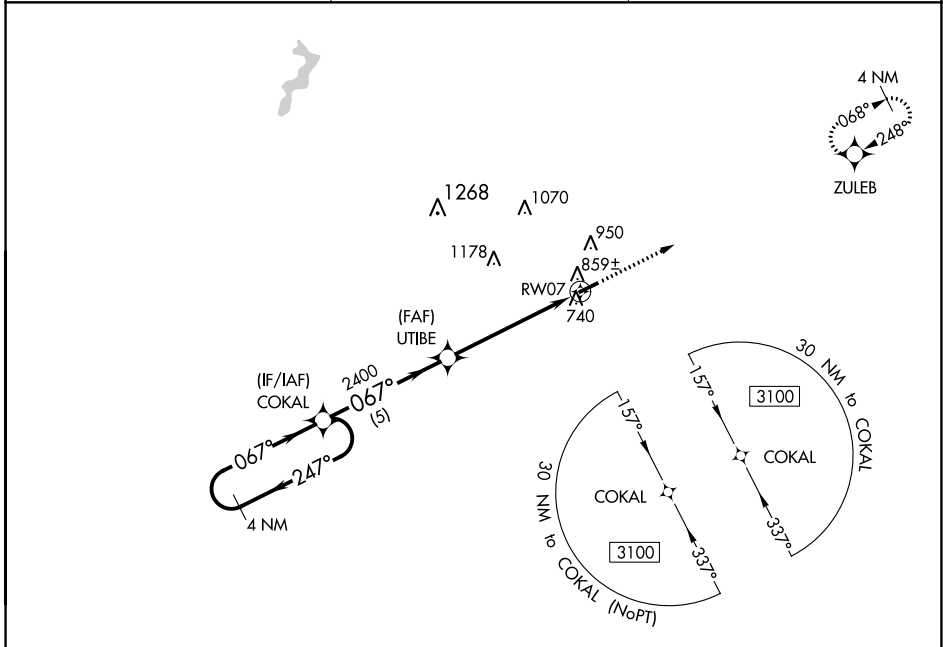
# RNAV (GPS) RWY 7

RUSSELLVILLE-LOGAN COUNTY (4M7)

**NA** Baro-VNAV NA. DME/DME RNP-0.3 NA. Use Springfield altimeter setting. Circling Rwy 25 NA at night.

MISSED APPROACH: Climb to 3100 direct ZULEB and hold.

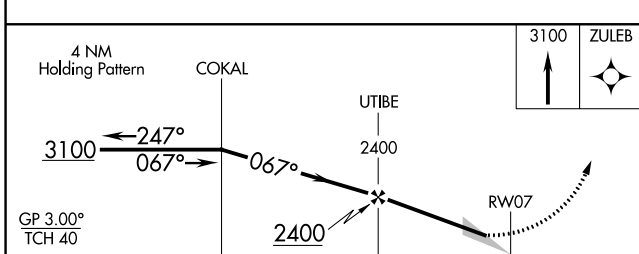
M91 AWOS-3 <b>120.675</b>	MEMPHIS CENTER <b>133.85 317.6</b>	UNICOM <b>122.7 (CTAF) 0</b>
------------------------------	---------------------------------------	---------------------------------



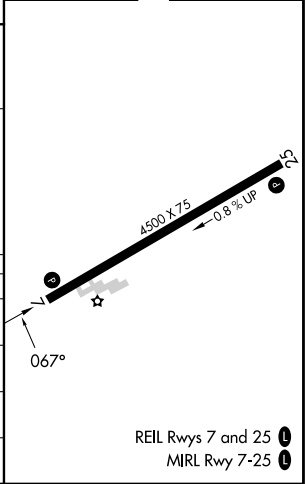
SE-1, 28 NOV 2024 to 26 DEC 2024

SE-1, 28 NOV 2024 to 26 DEC 2024

ELEV 692	TDZE 692
----------	----------



CATEGORY	A	B	C	D
LPV DA	982-1		290 (300-1)	
LNAV/VNAV DA	1060-1¼		368 (400-1¼)	
LNAV MDA	1160-1	468 (500-1)	1160-1¾	468 (500-1¾)
<b>C</b> CIRCLING	1320-1	628 (700-1)	1320-1¾	1520-2¾
			628 (700-1¾)	828 (900-2¾)



REIL Rwy 7 and 25 0  
MIRL Rwy 7-25 0