

WAAS CH <b>69408</b> <b>W34A</b>	APP CRS <b>342°</b>	Rwy Idg TDZE Apt Elev	<b>5498</b> <b>299</b> <b>300</b>
--	------------------------	-----------------------------	---

# RNAV (GPS) RWY 34

ANSON COUNTY/JEFF CLOUD FLD (A/F/P)

RNP APCH - GPS.

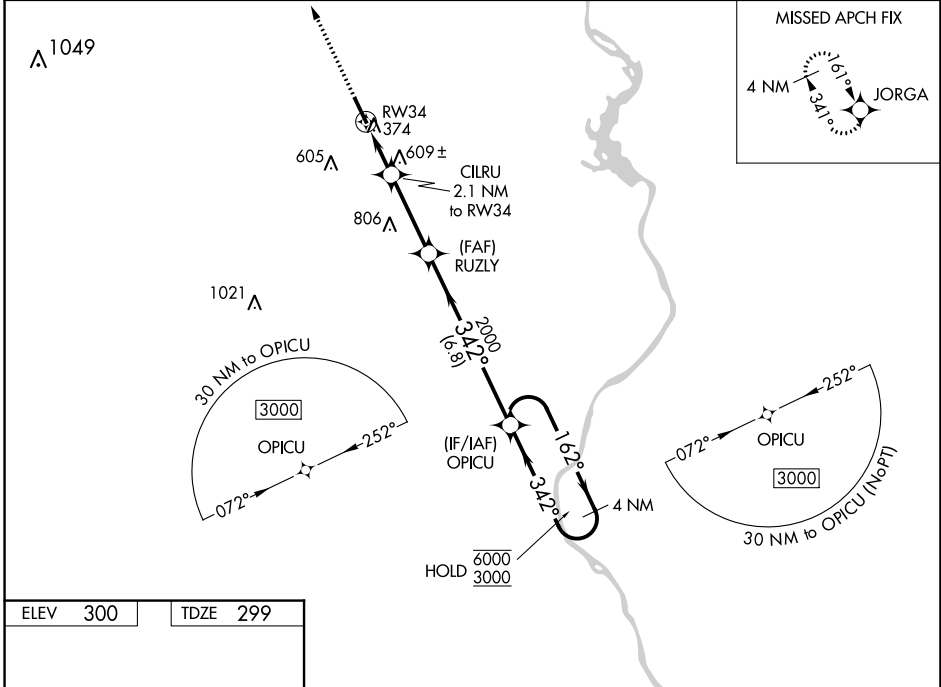
**⚠**  
 For uncompensated Baro-VNAV systems, procedure NA below -15°C or above 42°C. Rwy 34 helicopter visibility reduction below ¾ SM NA.

MISSED APPROACH: Climb to 3000 direct JORGA and hold.

AWOS-3  
**119.325**

CHARLOTTE APP CON  
**120.05 307.8**

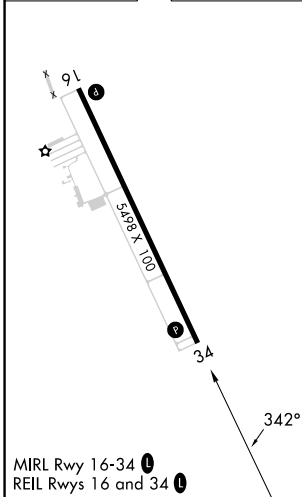
UNICOM  
**122.8 (CTAF) 0**



SE-2, 28 NOV 2024 to 26 DEC 2024

SE-2, 28 NOV 2024 to 26 DEC 2024

ELEV 300	TDZE 299
----------	----------



3000	JORGA	OPICU		4 NM Holding Pattern
↑	✧	CILRU 2.1 NM to RW34	RUZLY 2000	OPICU 162° → 6000 ← 342° 3000
RW34	1000	2000	342°	GP 3.00° TCH 42
← 2.1 NM →	← 3.1 NM →	← 6.8 NM →		
CATEGORY	A	B	C	D
LPV DA	649-1		350 (400-1)	
LNAV/VNAV DA	957-17/8		658 (700-17/8)	
LNAV MDA	860-1	561 (600-1)	860-15/8	561 (600-15/8)
CIRCLING	860-1	560 (600-1)	1080-21/4 780 (800-21/4)	1080-21/2 780 (800-21/2)