

WAAS CH <b>97640</b> <b>W01A</b>	APP CRS <b>010°</b>	Rwy Idg TDZE Apt Elev	<b>5000</b> <b>822</b> <b>822</b>
--	------------------------	-----------------------------	---

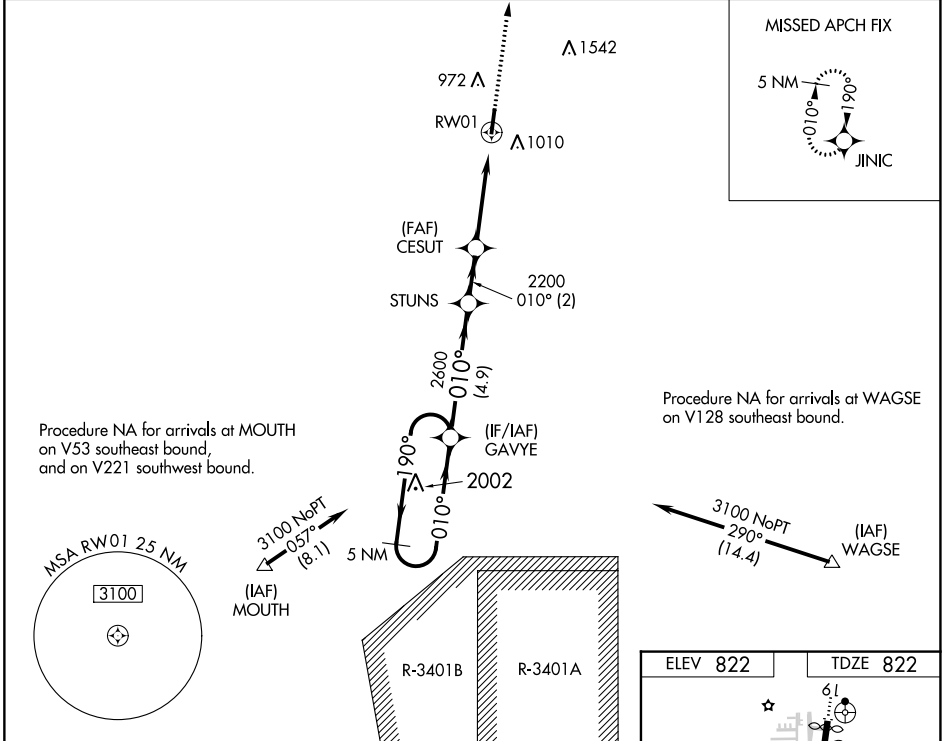
# RNAV (GPS) RWY 1

INDY SOUTH GREENWOOD (HF'Y)

**⚠** For uncompensated Baro-VNAV systems, LNAV/VNAV NA below -16°C (4°F) or above 54°C (130°F). Rwy 1 helicopter visibility reduction below ¾ SM NA. DME/DME RNP-0.3 NA.

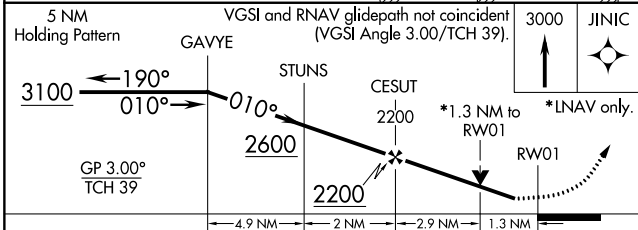
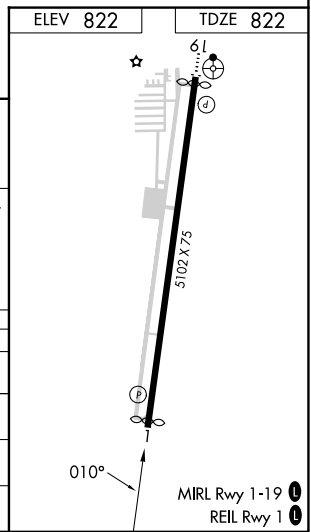
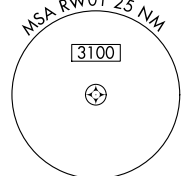
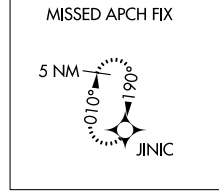
MISSED APPROACH: Climb to 3000 direct JINIC and hold.

AWOS-3P <b>118.525</b>	INDIANAPOLIS APP CON <b>124.95 317.8</b>	GCO <b>121.725</b>	UNICOM <b>123.0 (CTAF)</b>
---------------------------	---	-----------------------	-------------------------------



Procedure NA for arrivals at MOUTH on V53 southeast bound, and on V221 southwest bound.

Procedure NA for arrivals at WAGSE on V128 southeast bound.



CATEGORY	A	B	C	D
LPV DA		1167-1½	345 (400-1½)	
LNAV/ VNAV DA		1152-1½	330 (400-1½)	
LNAV MDA	1280-1	458 (500-1)	1280-1¾	458 (500-1¾)
<b>C</b> CIRCLING	1320-1 498 (500-1)	1380-1 558 (600-1)	1380-1½ 558 (600-1½)	1900-3 1078 (1100-3)

EC-2, 28 NOV 2024 to 26 DEC 2024

EC-2, 28 NOV 2024 to 26 DEC 2024