

APP CRS	Rwy Idg	3498
355°	TDZE	1102
	Apt Elev	1102

RNAV (GPS) RWY 36

FREEMAN FLD (3JC)

RNP APCH.

⚠ Circling Rwy 5, 23, 13, 31 NA. Circling NA west of Rwy 18-36.

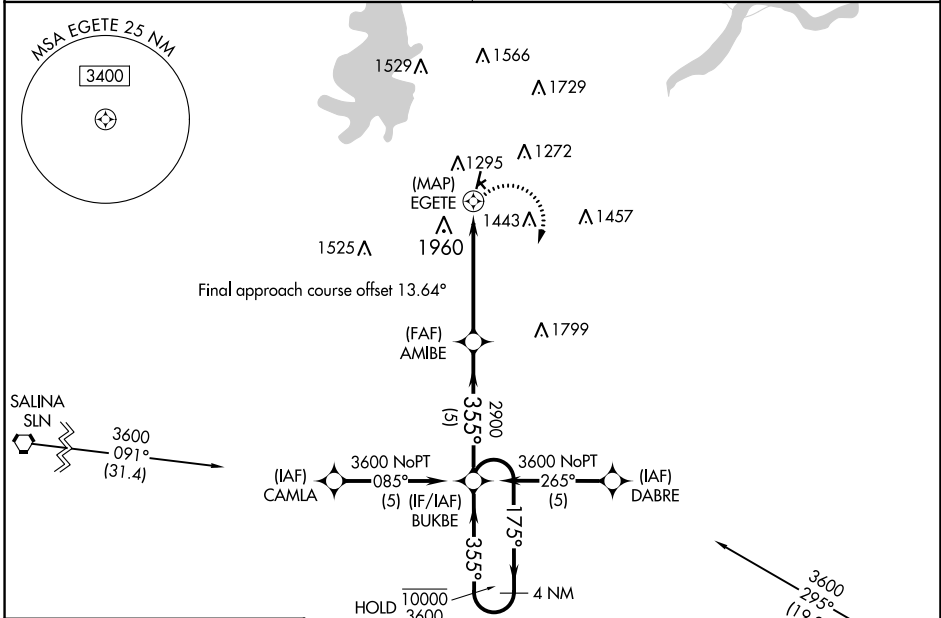
⚠ NA Procedure NA at night. Rwy 36 helicopter visibility reduction below 1 SM NA. Use Marshall AAF, KS altimeter setting.

❄ -23°C

MISSED APPROACH: Climbing right turn to 3600 direct BUKBE and hold.

MARSHALL AAF GCA*
121.25 254.35

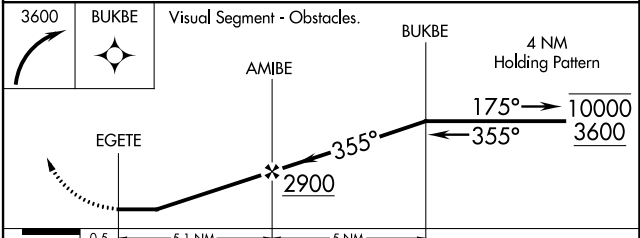
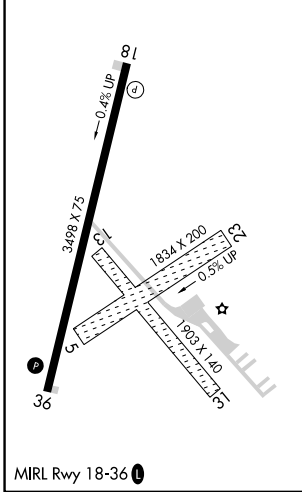
UNICOM
122.8 (CTAF) 1



NC-2, 28 NOV 2024 to 26 DEC 2024

NC-2, 28 NOV 2024 to 26 DEC 2024

ELEV 1102	TDZE 1102
-----------	-----------



CATEGORY	A	B	C	D
LNAV MDA	2120-1¼ 1018 (1100-1¼)	2120-1½ 1018 (1100-1½)	NA	
C CIRCLING	2120-1¼ 1018 (1100-1¼)	2120-1½ 1018 (1100-1½)	NA	