

LANETT, ALABAMA

AL-6620 (FAA)

24081

WAAS CH 97444 W24A	APP CRS 237°	Rwy Idg TDZE Apt Elev	5400 624 624
--	------------------------	-----------------------------	---

RNAV (GPS) RWY 24

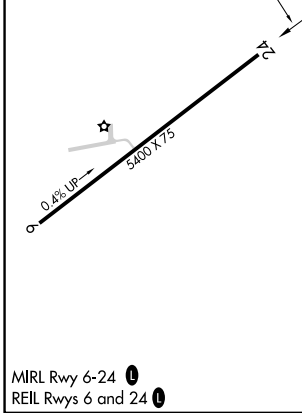
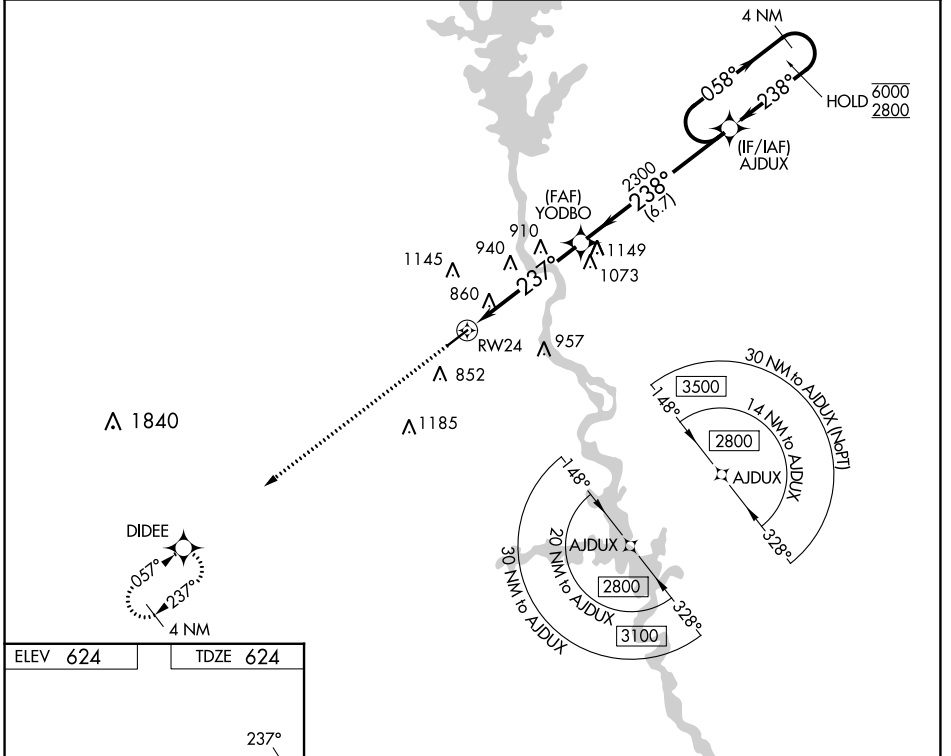
LANETT RGNL (7A.3)

RNP APCH-GPS.

Procedure NA at night. Rwy 24 helicopter visibility reduction below 1 SM NA. Use LaGrange altimeter setting.

MISSED APPROACH: Climb to 2900 direct DIDEE and hold.

LGC AWOS-3 126.325	ATLANTA CENTER 120.45 298.85	ATLANTA APP CON * 125.5 323.1	UNICOM 122.8 (CTAF) 0
------------------------------	--	---	--



ELEV 624	TDZE 624	Visual Segment - Obstacles.	
2900	DIDEE	AJDUX	4 NM Holding Pattern
		058° → 6000	← 238° 2800
		YODBO	
		RW24	
		5.1 NM	6.7 NM
CATEGORY	A	B	C
LP MDA	1160-1	536 (600-1)	1160-1½ 536 (600-1½)
LNAV MDA	1340-1	716 (800-1)	1340-2 716 (800-2)
CIRCLING	1340-1	716 (800-1)	1620-3 996 (1000-3)

MIRL Rwy 6-24 **0**
REIL Rwy 6 and 24 **0**

LANETT, ALABAMA
Orig 27JAN22

32°49'N-85°14'W

LANETT RGNL (7A.3)

RNAV (GPS) RWY 24

SE-4, 28 NOV 2024 to 26 DEC 2024

SE-4, 28 NOV 2024 to 26 DEC 2024