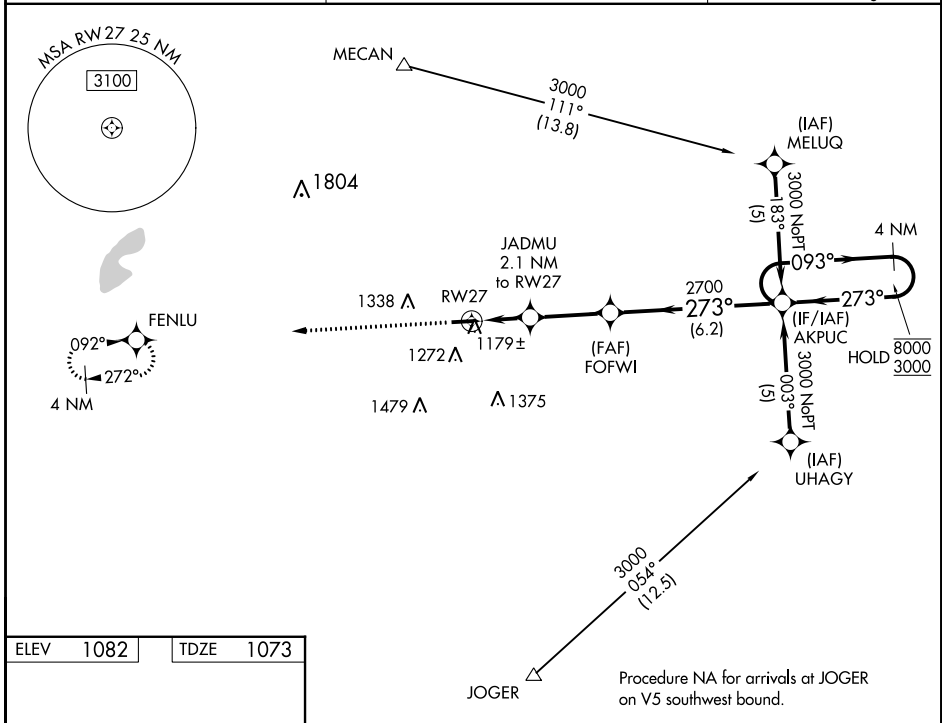


WAAS CH 61009 W27A	APP CRS 273°	Rwy Idg TDZE Apt Elev	4000 1073 1082
--	------------------------	-----------------------------	---

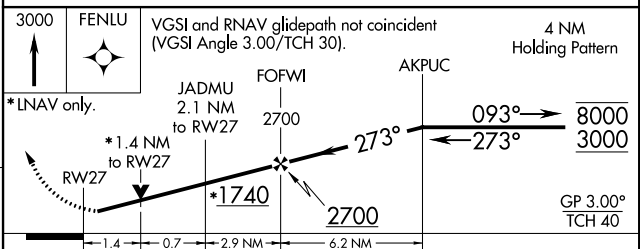
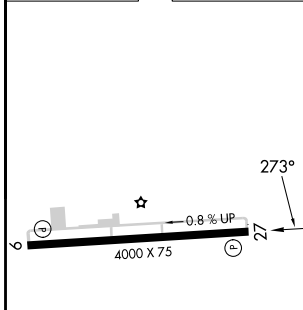
RNAV (GPS) RWY 27

MADISON COUNTY (UYF)

RNP APCH - GPS		MISSED APPROACH: Climb to 3000 direct FENLU and hold.
<p>⚠ Rwy 27 helicopter visibility reduction below $\frac{3}{4}$ SM NA. For uncompensated Baro-VNAV systems, LNAV/VNAV NA below -17°C or above 54°C.</p>		
AWOS-3PT 120.85	COLUMBUS APP CON 134.0 279.6	UNICOM 123.0 (CTAF) 0



ELEV 1082	TDZE 1073
-----------	-----------



CATEGORY	A	B	C	D
LPV DA	1400-1 $\frac{1}{4}$ 327 (400-1 $\frac{1}{4}$)			
LNAV/VNAV DA	1449-1 $\frac{1}{2}$ 376 (400-1 $\frac{1}{2}$)			
LNAV MDA	1540-1	467 (500-1)	1540-1 $\frac{3}{8}$ 467 (500-1 $\frac{3}{8}$)	1540-1 $\frac{1}{2}$ 467 (500-1 $\frac{1}{2}$)
CIRCLING	1600-1 518 (600-1)	1640-1 558 (600-1)	1640-1 $\frac{1}{2}$ 558 (600-1 $\frac{1}{2}$)	1840-2 $\frac{1}{2}$ 758 (800-2 $\frac{1}{2}$)

REIL Rws 9 and 27 **0**
MIRL Rwy 9-27 **0**

EC-2, 28 NOV 2024 to 26 DEC 2024

EC-2, 28 NOV 2024 to 26 DEC 2024