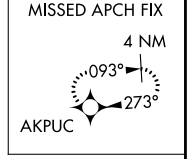
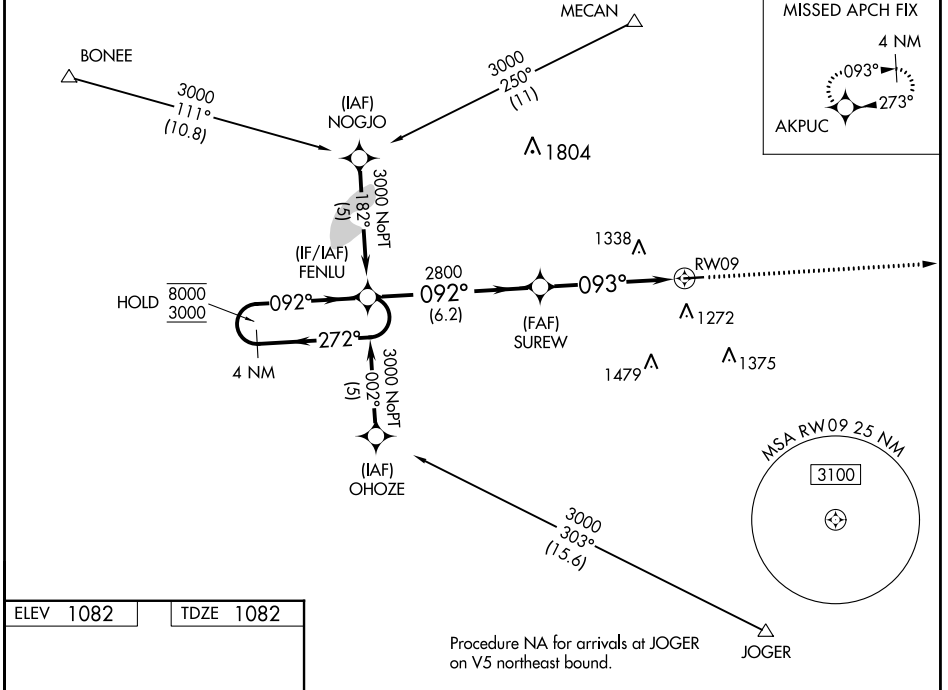


WAAS CH 53409 W09A	APP CRS 093°	Rwy Idg TDZE Apt Elev	4000 1082 1082
--	------------------------	-----------------------------	---

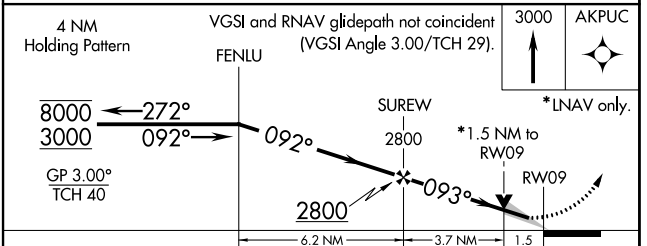
RNAV (GPS) RWY 9

MADISON COUNTY (UYF)

RNP APCH - GPS.		MISSED APPROACH: Climb to 3000 direct AKPUC and hold.
AWOS-3PT 120.85	COLUMBUS APP CON 134.0 279.6	UNICOM 123.0 (CTAF) 0



ELEV 1082	TDZE 1082
-----------	-----------



CATEGORY	A	B	C	D
LPV DA	1332-1 250 (300-1)			
LNAV/VNAV DA	1548-1 3/4 466 (500-1 3/4)			
LNAV MDA	1580-1	498 (500-1)	1580-1 1/2 498 (500-1 1/2)	1580-1 1/2 498 (500-1 1/2)
CIRCLING	1600-1 518 (600-1)	1640-1 558 (600-1)	1640-1 1/2 558 (600-1 1/2)	1840-2 1/2 758 (800-2 1/2)

REIL Rwy 9 and 27 **0**
MIRL Rwy 9-27 **0**

EC-2, 28 NOV 2024 to 26 DEC 2024

EC-2, 28 NOV 2024 to 26 DEC 2024