

APP CRS	Rwy Idg	2077
008°	TDZE	181
	Apt Elev	181

RNAV (GPS) RWY 1

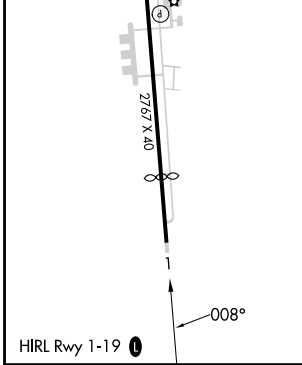
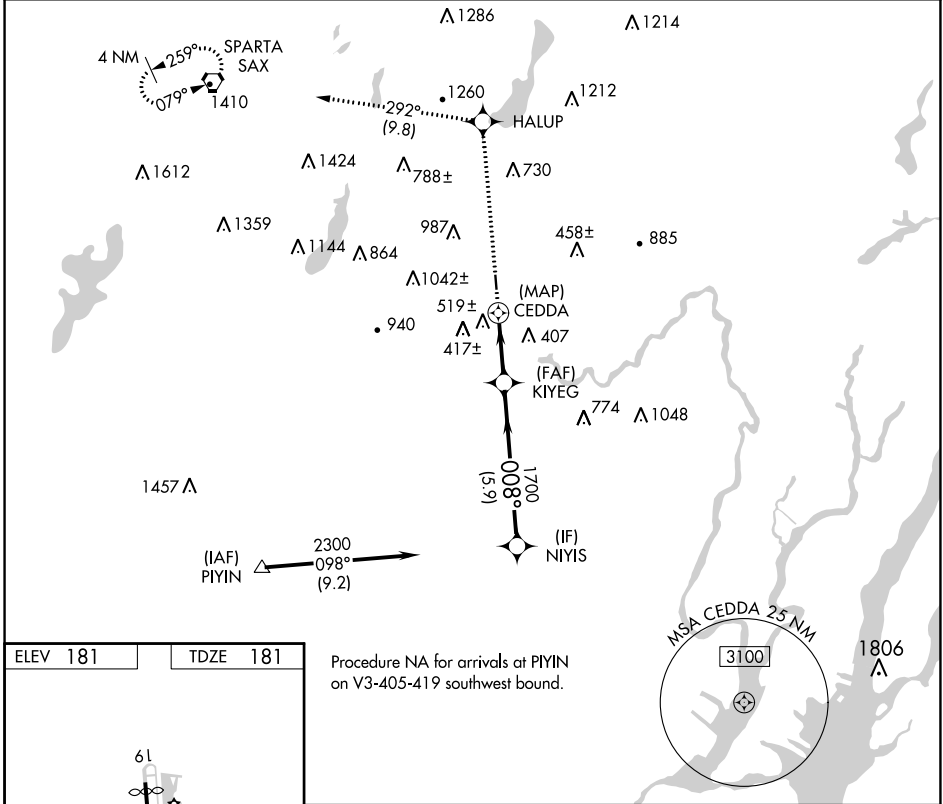
LINCOLN PARK (NØ7)

RNP APCH.

▼ Rwy 1 helicopter visibility reduction below 1 SM NA.
▲ NA Use Teterboro altimeter setting. Procedure NA at night.

MISSED APPROACH: Climb to 3000 direct HALUP and on 292° track to SAX VORTAC and hold.

TEB D-ATIS 114.2 132.85	NEWARK APP CON 127.6 379.9	GCO 121.725	UNICOM 122.8 (CTAF) 0
-----------------------------------	--------------------------------------	-----------------------	---------------------------------



Procedure NA for arrivals at PIYIN on V3-405-419 southwest bound.

3000	↑	HALUP	292° tr	SAX	NIYIS
					2300
		CEDDA	4.00° TCH 30	KIYEG	1700
	1 NM	2.5 NM		5.9 NM	
CATEGORY	A		B	C	D
LNAV MDA	860-1¼ 679 (700-1¼)		NA		
C CIRCLING	1260-1¼ 1079 (1100-1¼)		NA		

NE-2, 28 NOV 2024 to 26 DEC 2024

NE-2, 28 NOV 2024 to 26 DEC 2024