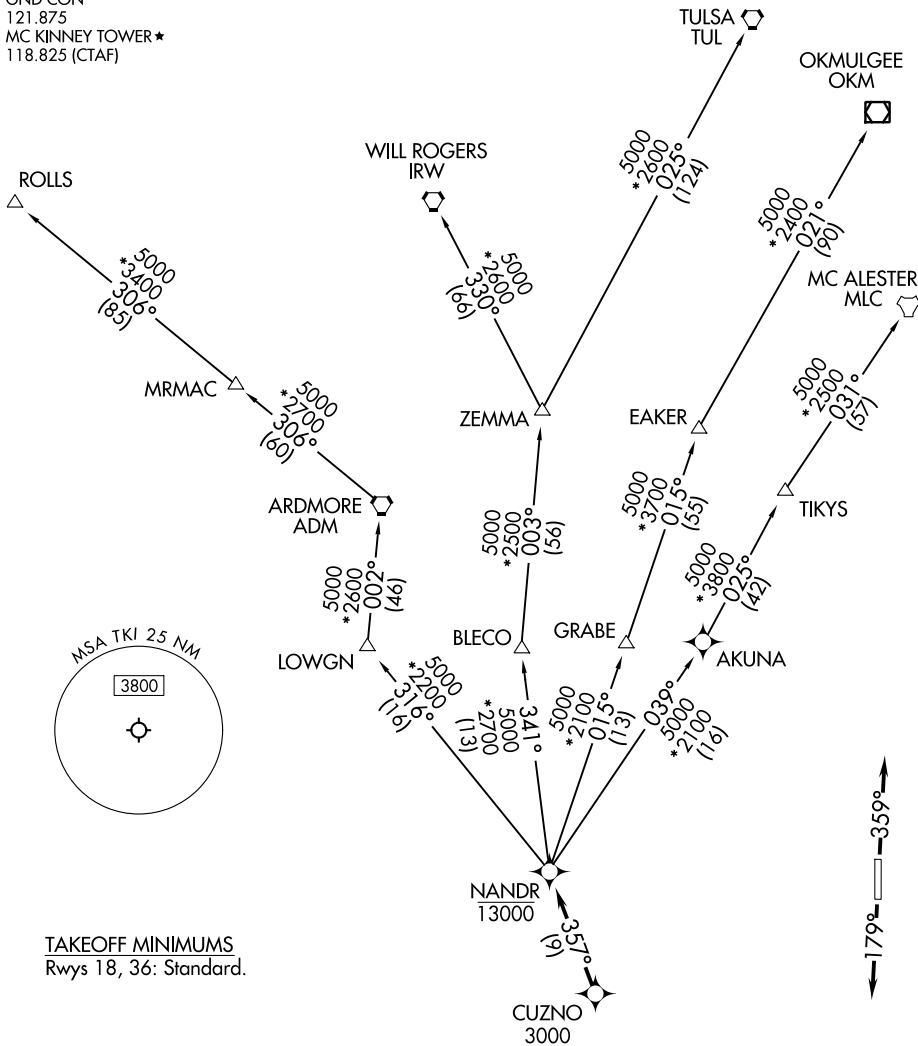


NANDR TWO DEPARTURE (RNAV)

LONE STAR DEP CON
 124.3 282.275
 CLNC DEL (When twr closed)
 121.35
 GND CON
 121.875
 MC KINNEY TOWER ★
 118.825 (CTAF)

RNAV 1 - DME/DME/IRU or GPS.
 RADAR required.

**TOP ALTITUDE:
 ASSIGNED BY ATC**



SC-2, 28 NOV 2024 to 26 DEC 2024

SC-2, 28 NOV 2024 to 26 DEC 2024

NOTE: EAKER Transition: For TUL terminal arrivals only.
 NOTE: TULSA Transition: For all aircraft overflying TUL VORTAC.
 NOTE: Aircraft arriving to the Oklahoma City terminal area,
 file and expect the ZEMMA enroute transition.

NOTE: Chart not to scale.

(CONTINUED ON FOLLOWING PAGE)

NANDR TWO DEPARTURE (RNAV)

NANDR TWO DEPARTURE(RNAV)



DEPARTURE ROUTE DESCRIPTION

TAKEOFF RUNWAY 18: Climb on heading 179° or as assigned by ATC, thence...

TAKEOFF RUNWAY 36: Climb on heading 359° or as assigned by ATC, thence...

. . . . expect RADAR vectors to cross CUZNO at or above 3000, then on track 357° to cross NANDR at or below 13000, then on assigned transition.

EAKER TRANSITION (NANDR2.EAKER)

MC ALESTER TRANSITION (NANDR2.MLC)

OKMULGEE TRANSITION (NANDR2.OKM)

ROLLS TRANSITION (NANDR2.ROLLS)

TULSA TRANSITION (NANDR2.TUL)

WILL ROGERS TRANSITION (NANDR2.IRW)

ZEMMA TRANSITION (NANDR2.ZEMMA)

SC-2, 28 NOV 2024 to 26 DEC 2024

SC-2, 28 NOV 2024 to 26 DEC 2024